

# Sustainable Travel Policy

## 1. Vision

The Sustainable Travel Policy is designed to reduce the need for travel, and encourage staff, students, and visitors to choose more sustainable travel modes. The policy aims to encourage more active, healthy and environmentally friendly travel decisions, and to assist the surrounding communities by reducing traffic congestion and the associated harmful effects on the environment from single-car usage and higher carbon-emitting modes of travel.

The Sustainable Travel Policy forms part of the University's approach to tackling sustainability, as defined by our Sustainability Policy. The University is committed to reducing its emissions in line with a Net Zero Carbon target of 2030 and aims to become the most sustainable university in London.

## 2. Scope

The Sustainable Travel Policy encompasses the following areas of university related travel:

- Commuting – travel to and from our campuses by students, staff, and visitors.
- Business Travel – local, domestic, or international travel taken on behalf of the University.
- Campus Travel – travel undertaken within or between our campuses, including the campus shuttle bus, security, pool vehicles, and deliveries.

This policy sets out five objectives for transport-related emissions reduction, as well as the actions being taken towards these objectives. It then provides a framework for sustainability for business travel.

## 3. Objectives

To reduce the carbon generated from the commutes of our staff and students, the University commits to the following six objectives:

1. Reduce the requirement to travel, supported by technology.
2. Reduce single-occupancy vehicle (SOV) usage by 30% by 2028.
3. Develop 'active campuses', encouraging walking and cycling.
4. Develop partnerships with local authorities and Transport for London to improve public transport and promote sustainable travel.
5. Improve air quality through sustainable business and campus travel.
6. Introduce a sustainable travel incentive program.

### **Objective 1: Reduce the requirement to travel supported by technology.**

One of the primary ways to reduce the footprint of the University's travel-related emissions is to reduce the demand for travel in the first instance. The University requires managers in conjunction with their staff to consider whether activities can be successfully carried out online, without travelling. We also plan to share or store materials for productions and events on-campus, where possible reducing the requirement for transportation.

## **Objective 2: Single Occupancy Vehicle Usage**

High dependency on commuting to campus by car is increased by single-occupancy vehicles (SOV) for commuting. This is particularly visible at our Docklands campus, where car parking will be the only major site for this to occur after the redevelopment of the Stratford Campus. SOV usage adds to existing traffic and congestion within London and reduces the efficiency of public transport in the area. It also significantly adds to poor air quality and the harmful effects of carbon emissions on the environment.

The Sustainable Travel Policy aims to incentivise alternative modes of travel, achieving a modal shift from car travel wherever possible. In addition, the University will continue with the following:

- Utilisation of “Ride share” schemes.
- Provision of EV charging stations on campus.
- Inter campus bus
- Use of public transport to campus, including the DLR service between Docklands and Stratford and the Superloop bus network introduced by TfL (objective 4).

## **Objective 3: Active Campuses**

The University has committed to the revitalisation of its campuses through the ongoing Connected Campus programme. Connected Campus seeks to improve the University estate to encourage student and staff engagement, collaboration, and active travel. In addition to the Connected Campus improvements, the University will continue with the following actions:

- Biodiversity and green corridors, pedestrianisation with universal design for mobility.
- Promote cycling and walking routes such as the Brompton Bike hire scheme and capital ring network.
- Provision of secure cycle storage, lockers, and shower changing facilities.
- Promote the cycle-to-work scheme including the salary sacrifice scheme for bicycles, e-bikes, and Electric Vehicles.
- Collaboration with local authorities and partners on cycling safety.
- Development of an active travel campaign.
- Access to sports activities on both main sites when Stratford re-development occurs

## **Objective 4: Public Transport**

The University recognises its location in East London is a strong point for connectivity to multi-modes of public transport and provides ample opportunities for the decarbonisation of our staff and student commutes.

Our Docklands campus is located adjacent to the Cyprus DLR station with the Superloop bus network, while our Stratford and USS campuses are located within a 5-minute walk from the Maryland Elizabeth Line and Stratford stations, respectively. The University offers season ticket loans to assist staff with being able to access public transport along with the (free) inter-campus bus service.

## **Objective 5: Business and Inter-Campus Travel**

The University will seek to target a reduction in carbon emissions through its business and inter-campus travel. To support this, the University will continue with the following actions:

- Promote the EV charging points across campus and wider network.
- Procure when due for replacement EV fleet vehicles.
- Work with our supplier towards provision of an EV inter-campus shuttle bus.
- Evaluate freight-related emissions as part of Scope 3 reporting.

- Collaborate with sustainable-certified logistics providers.
- Working with suppliers to consolidate deliveries to the University.
- Plan all events, exhibitions and shows to begin and end at times that allow the use of public transport.
- Supporting domestic flights only in exceptional circumstances

In addition, the University will review and implement a mandatory framework based upon the travel hierarchy for travel to be introduced.

To minimise the environmental impact of travel, consideration should be given to the “travel hierarchy” (Figure 1)

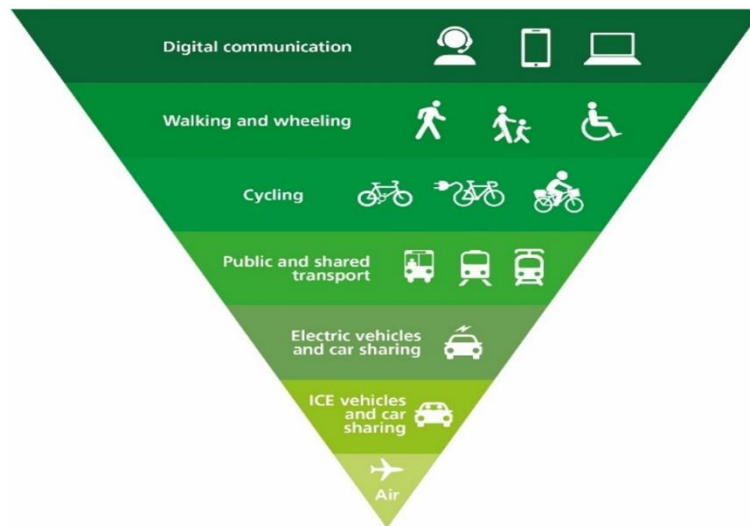


Figure 1. Sustainable Travel Hierarchy

**Objective 6: Incentive Programme**

There are several existing and emerging incentive programmes for sustainable travel options across the workplace. We will continue to explore features such as salary sacrifice for EV charging costs, reward schemes for low-carbon commuting, parking discounts only for carpooling or EV users and prizes or competitions for promotional campaigns throughout the year.

**4. Monitoring and Accountability**

This policy will be reviewed annually. Adherence to the policy commitments will be monitored on an annual basis. We will publish our annual travel and transport impact as a part of our Annual Sustainability Report, with key performance indicators provided.

|                        |  |
|------------------------|--|
| Document               | Sustainable Travel Policy (a supporting policy of the Sustainability Policy) |
| Approving Authority    | Deputy Vice-Chancellor and Chief Finance Officer                             |
| Responsible Department | Estates and Facilities   Sustainability                                      |
| Review period          | Annual   |
| Date                   | 31-07-2025   |