



# PSYCHOLOGY

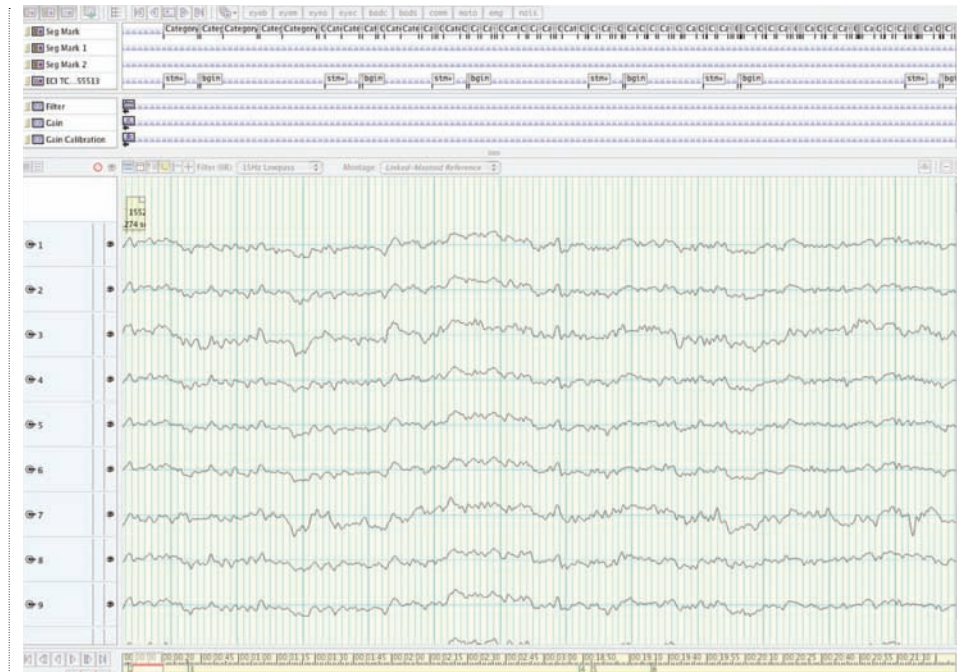
## RETHINKING DEPRESSION, ENHANCING INDIVIDUAL AND COLLECTIVE WELLBEING

In modern western societies, depression and other psychological disorders appear to have reached epidemic proportions. However the dividing line between 'clinical' conditions and 'normal' distress is highly contentious. Amid renewed debate around the diagnosis and treatment of these conditions, leading experts in the field of mental health gathered at UEL in September to examine our current understanding of distress and explore innovative ways of dealing with mental suffering.

'De-medicalising Misery', organised by Professor Mark Rapley, Director of Clinical Psychology at UEL, with support from the British Psychological Society, brought together clinical psychologists, psychiatrists and service users from across the UK and internationally. Topics covered included the antidepressant industry, the social construction of madness and psychopathology, acute psychiatric care, and the long-term effects of domestic violence on children. ■

Our School of Psychology is recognised as one of the UK's leading centres for postgraduate professional psychology training. We provide a wide range of professionally accredited doctoral programmes across clinical, educational, occupational and counselling psychology, and masters programmes in positive psychology, career guidance, counselling and psychotherapy. The School is renowned for research in fields as diverse as infant development, health psychology, cognitive neuropsychology, educational psychology, and post-injury/stroke recovery. Staff and research students are supported by state-of-the-art specialist laboratories, including infancy, EEG, psychophysiology and virtual reality labs.

Our new Institute for Research in Child Development was established in 2007 to increase understanding of the social context of psychological development in children. Professor Derek Moore and Dr Rachel George published groundbreaking research in infant cognition demonstrating for the first time that six-month-



◀▲ Electroencephalographic equipment and read-outs

old babies are able to distinguish the solidity of human forms and patterns of movement.

Professor Philip Zimbardo, who conducted the world-famous Stanford Prison Experiment, and was recently an expert witness in the Abu Ghraib abuse hearings, visited in April to give one of only three UK talks and launch his new book, 'The Lucifer Effect: How good people turn evil'.

In June, final-year student Kate Canaway won a national essay competition organised by the Higher Education Academy Psychology Network. In November, more than 200 business leaders, coaches and psychologists attended a UEL conference organised by Dr Ilona Boniwell, leader of our unique MSc programme in Applied Positive Psychology. ■

*Renowned for research in fields as diverse as infant development, health psychology, cognitive neuropsychology, educational psychology, and post-injury recovery, our staff and research students are supported by state-of-the-art specialist facilities, including infancy, EEG, psychophysiology and virtual reality laboratories.*