



School of Psychology
Research Newsletter
2011



Professor Mark Davies
Dean of School



Professor Mark McDermott
School Research & Knowledge
Exchange Leader (2003-2011)



Professor Derek Moore
Director of Institute for
Research in Child Development
(IRCD)



Dr James Walsh
School Research Degrees
Leader



Dr Christian Van Nieuwerburgh
Applied & Professional
Psychology Research Group
Coordinator (APPRG)



Dr Melanie Vitkovitch
Brain, Cognition & Behaviour
Research Group Coordinator
(BCBRG)



Dr Kirstie Soar
Health Psychology Research
Group Coordinator (HPRG)



Chris Pawson
Psychology Learning & Teaching
Research Group Coordinator
(PLATRG)



Dr Ian Tucker
Psychology & Social Change
Research Group Coordinator
(PSCRG)



UEL School of Psychology

Research & Knowledge

Exchange Newsletter Autumn 2011

Welcome to this 2011 issue of the UEL School of Psychology Research & Knowledge Exchange Newsletter. This edition looks at the activity of our six research groupings within the School. The University supports the identification of research *Institutes*, *Centres* and *Groups*, designated criteria relating to and defining the remit of each. In addition, research *Teams* and *Labs* are recognised within Groups. The School of Psychology plays host to one research Institute and five research Groups, as follows:

- ◆ The Institute for Research in Child Development (IRCD)
- ◆ Brain, Cognition and Behaviour Research Group (BCBRG)
- ◆ Psychology and Social Change Research Group (PSCRG)
- ◆ Health Psychology Research Group (HPRG)
- ◆ Applied and Professional Psychology Research Group (APPRG)
- ◆ Psychology Learning and Teaching Research Group (PLATRG)

I hope you will enjoy reading about the recent and impending research activity of these groups of UEL psychology academic colleagues. If you would like to join with us as a partner in the delivery of one or more of the exciting research ventures featured in this newsletter, please do get in contact.

The previous edition of this Bulletin was published in June of 2010. The higher education (H.E.) context has changed significantly since then, and so UEL is changing alongside and indeed ahead of what is now to come. In meeting the challenges set by the changing H.E. context, we are being led ably by and welcome the arrival of our new Dean, **Professor Mark Davies**, with ten years of experience previously as Head of Department of Psychology at Nottingham Trent University. Mark set up the first psychology laboratory at Nottingham Trent, his research now focusing on the psychological impact of digital technologies, and in particular of digital gaming.

Despite the changing H.E. landscape, the quality of our research remains at the core of our academic offer, whilst undoubtedly enhancing the quality of the student experience is a leading consideration for us all. As knowledge producers, and not just as knowledge reproducers, we strive to instil in our students our passion for conducting 'impactful', ground-breaking research. Thereby, we give them the tools to evaluate new knowledge and to become themselves part of the next generation of knowledge producers.

The funding landscape for British research has seen the arrival of various challenges this year. Firstly, the funding allocation to research rated as 2* in RAE2008 for the 2011-12 year has been modified such that research of this quality, *'...that is recognised internationally in terms of originality, significance and rigour'*, has been reduced by two-thirds and released back to research rated as 3* and 4*. So, what we may have lost on the swings, we may gain back in part on the roundabouts. Undoubtedly, however, the bar has been raised for REF2013 and this has implications for research strategy.

This year also bore witness to a change in UK research council post-graduate funding, with the ESRC awarding to some University consortia the status of Doctoral Training Centre, but withdrawing the possibility of Doctoral Training Unit recognition for others, following the 2010 autumn spending review. So, for us in UEL, external support for PhD studentship must now come from elsewhere.

In such a climate, it is clear that we will need to be ever-increasingly inventive in terms of where and how we capture external funds to support sustainable programmes of research: for example, contract research, engagement with commercial companies in knowledge transfer partnerships, with other elements of the public sector, with charities, and with European sources of funding must be at the forefront of our endeavours. Project-based working, i.e. collective rather than individual approaches to grant writing, may be a very viable way forward for us, where 'time' becomes an ever more precious academic resource.

This last year also saw the full emergence of the new phoenix that has arisen from the ashes of RAE2008, and that is of course, the *'impact'* of research. As academics we are having to learn new skills and habits to proactively enhance the impact of our research. No longer is it enough to conduct and publish our research; now we must also learn and deploy the skills of research advocacy and 'placement', recognising that research as a 'product' needs to be actively promoted by those who have produced it. As academics we may not be used to such activity, thinking it possibly immodest; but now, with impact being a fully fledged part of REF2013, we must engage with ensuring that our work will 'make a difference'.

Professor Mark McDermott

m.r.mcdermott@uel.ac.uk

Institute for Research in Child Development (IRCD)

GROUP RESEARCH INTERESTS

Issues around the impact of deprivation and risk are central to the work of IRCD given the population of East London, the mission of the University, and political interest in the effect on children that developmental difficulties and socio-economic adversities can have.

For example, approximately half of children in some disadvantaged populations have significantly poorer language skills than others of similar age. So, in IRCD we develop, utilise and adapt, high quality, evidence-based, lab-based and/or experimental methods from the social- and neuro- sciences to address these issues.

In particular, early assessment and intervention, and emotional health are key areas of activity for IRCD, and underpin Government and Children's Services agendas. For early intervention to be fully effective and cost beneficial, IRCD recognises that evidence-based programs are needed, and that these programs must: start as early as possible, better target individuals at risk, and be supported by adequate screening and good scientific evidence for their effectiveness.

Accordingly, the work of IRCD spans three overlapping themes:

- ◆ *Understanding biological, social and environmental effects on children's cognition, health, and wellbeing and developing effective interventions*
- ◆ *Adapting new methodologies to help explore real world problems*
- ◆ *Understanding development itself*

IMPACTS, GRANTS & COLLABORATIONS

IRCD staff continue to undertake work that has significant academic and real world impact. We work with many external organisations to create better methods and interventions. Our theoretical and applied work is widely and highly cited in the academic literature and we continue to give talks to representative audiences, charities and academics: December 2010 sees the publication of an important new book with contributions from **Professor Moore** and the **DAISY** team at UEL and Case Western Reserve University US entitled: *Alcohol, Drugs and Medication in Pregnancy: The Outcome for the Child*.



TALBY stands for 'Take a Look Baby' and is funded by a successful £166,000 Nuffield grant.

Current Grants & Collaborations

£1,991,000 NIHR Public Health Programme grant. *Evaluating the impact of urban regeneration and the Olympics on health and health inequalities in adolescents and their parents.* **Moore with Cummins** (PI), **Stansfeld** (QMUL), **Renton** (UEL), **Petticrew** (LSHTM) et al. (2011-2013).

£166,000 Nuffield Foundation grant. *Using new technologies to engage parents from disadvantaged areas in the assessment of the language and social development of their babies.* **Moore, Tomalski, Kushnerenko** (UEL) with **Johnson, Karmiloff-Smith** (Birkbeck) (2010-2013).

£670,000 Wellcome Trust programme grant. *A randomised cluster controlled trial of community level interventions to address social and structural determinants of physical activity, diet and mental well being.* **Moore with Renton** (UEL) **Petticrew** (LSHTM) **Hayes** (LSHTM) **Clow** (Westminster) (2008-2012).

£65,000. *Industrial partner. (2010-2013). PhD studentship funding.* **Caroline Edmonds.**

Recent Funding Proposals

ESRC: *Britishness and The Olympics: Children's National Identity through the Journey of the 2012 Games.* £464,000 with **Virginia Lam** (UEL) and **Martin Barrett** (Surrey) .

Action Medical Research: *Using new methodologies to explore early developmental differences in late preterm infants (LAPIS study).* **£128,000** with **Kushnerenko, Birtles, Edmonds**, (UEL) **Costeloe** (Homerton) **Shah** (St Barts, Royal London) **Harden** (Newham) et al.

NIHR Public Health Programme grant : (£1m+) *Effectiveness of primary school based counseling for psychological difficulties in children from deprived areas across the UK. A randomised cluster controlled trial.* **Moore, George, Renton** (UEL) with **Cooper** (Strathclyde), **Wright, Nash** (York); **King, Hunter et al** (UCL). In partnership with Place2be.

Group Members

Core Staff

Dr Haiko Ballieux
Dr Deidre Birtles
Dr Caroline Edmonds
Caroline Frostick
Dr Rachel George
Dr Elena Kushnerenko
Dr Virginia Lam
Prof Derek Moore (**Director**)
Chris Pawson
Dr Przemek Tomalski

Interns

Glorianne Spitieri
Daniele Borghi
Josephine Calabrese
Anna Metcalfe
Jayce Okrah
Evalyn Powell
David Fassbender

CONFERENCES & INVITED TALKS

Edmonds, C. (2010) The effect of hydration on cognition in children. Invited Talk: Nestle Research Center, Lausanne, Switzerland. 4th February 2010.

Edmonds, C. (2010) Benefits of hydration on cognition in children. A summary of research to date. Keynote Speaker: Nestle Round Table on Hydration, The Wellcome Trust. 25th February 2010.

Kushnerenko, E., Tomalski, P., Moore, D.G. Increased attention to mouth articulation in infants prevents illusory fusion of conflicting audiovisual information. BPS meeting, 12-15 September, 2010, London, UK

Kushnerenko, E., Tomalski, P., Ribeiro, H., Potton, A. Axelsson, E. and Moore, D.G. (2010) Audiovisual speech integration: Visual attention to articulation affects brain responses in 6-9 month old infants. 15-17 April, 2010, Granada, Spain, EPS/SEPEX

Miroballi S, Bartesaghi R, Birtles D, Guidi S, Moore D.G, Zoccoli, G. (2010) Impairment of cerebellar development and early motor and cognitive functioning. Down Syndrome Research Forum, November 2010, The Sarah Duffen Centre, Portsmouth

Moore D.G. (2010) Social and Cognitive development in children with Down's syndrome: trying to build wider developmental models. Keynote speaker ECIDD: European Conference on Psychological Theory and Research on Intellectual and Developmental Difficulties. University of Geneva 19th June 2010.

Moore D.G. (2010) Assessing the impact of socio-economic status: from infant brains to social gains. Invited talk Neurocognitive Development Lab, Birkbeck College, London. 16th March 2010

Moore D.G. (2010) Perceiving form, motion and meaning in point-light displays: evidence from babies and children with developmental difficulties. EPS/ESF Body Representation Workshop 29th March 2010, Goldsmiths College, London

Tomalski, P, Ribeiro, H, Johnson, MH, Moore, DG, & Kushnerenko E. (2010). Audio-visual integration of speech information in 6-8 month old infants—an eye-tracking study. Poster for the International Conference on Infant Studies, March 2010, Baltimore, MD, USA.

Guiraud J., **Kushnerenko E., Tomalski P.,** Charman T., Johnson M.H. & the BASIS team. Atypical Auditory Responses in Infants at Risk for Autism. 18th Annual Meeting of the Cognitive Neuroscience Society, San Francisco, CA, US, 2 - 5 April 2011. (Poster presentation)

GROUP NEWS

IRCD continues to run a successful intern scheme and currently has a number of interns working on a range of projects which includes Babylab research as well as the Well London Project.



Vanathi Tharmaratnam

IRCD welcomes **Vanathi Tharmartnam** as a full time Research Assistant. Vanathi has a track record as a successful teacher, completing her PGCE in Canada before teaching in the UK and also has a MSc in Psychoanalytical Developmental Psychology which she completed at University College London. Vanathi will be working closely with Caroline Frostick on the large scale cross-institutional Well London project.

IRCD bids intern **Daniele Borghi** farewell as he moves on after successfully completing his period of internship. However, IRCD interns, **Glorianne Spiteri** and **Anna Metcalfe** continue to work as key team members. They are also joined by student interns **Jayce Okrah**, **Evalyn Powell** and **David Fassbender**. Both Jayce and Evalyn kindly took part in publicity photos for the research suite and we look forward to their future involvement with the team.

Dr Elena Kushnerenko and IRCD were recently involved in cross cultural research and knowledge exchange with colleagues from Japan. Dr Kaoru Sekiyama and her PhD student Satoko Hisanaga from Kumamoto University visited the IRCD labs from 22nd February to 4th March to learn and collaborate on a cross-linguistic ERP study into the McGurk effect in infants.

Congratulations to **Dr Caroline Edmonds** who won a UEL 2010-11 Promising Researcher Award last year. This was the second time Dr Edmonds had won such an award, this time for **£14,790** to investigate, "The effect of hydration status on cognitive performance in older adults". For more news on this project and others, please see www.carolineedmonds.com

And, congratulations to **Dr Sara Garib-Penna** who successfully defended her PhD in October of last year and has had minor corrections accepted. Her Director of Studies was Prof Derek Moore with Dr Rachel George as Co-supervisor.

Selected Publications

Wattam-Bell, J., **Birtles, D.**, Nyström, P., et al (2010). Reorganization of Global Form and Motion Processing during Human Development. *Current Biology*, 20, 411-415.

Edmonds, C.J. (2010). Does having a drink of water help children think? A summary of some recent findings. *School Health*, 6 (5), 58-60.

Edmonds, C.J., Isaacs, E.B, Cole, T.J., et al (2010). The effect of intrauterine growth on verbal IQ scores in childhood: A study of monozygotic twins. *Pediatrics*, 126 (5), e1095-e1101.

Csibra, G., **Kushnerenko, E.**, & Grossmann, T. (2010). Electrophysiological methods in studying infant cognitive development. To appear in C. Nelson & M. Luciana (Eds.), *Handbook of Developmental Cognitive Neuroscience* (2nd Edition) MIT Press, Cambridge, MA.

Jansson-Verkasalo, E., Ruusuvirta, T., Huotilainen, M., Alku, P., **Kushnerenko, E.**, et al (2010) Atypical perceptual narrowing in prematurely born infants is associated with compromised language acquisition at 2 years of age. *BMC Neurosci.* 30; 11: 88.

Kushnerenko, E., Johnson, MH (2010) The Newborn Behavior, in Lagercrantz, H. Hanson, M., Peebles, Ment, & Evrard, P (Eds) *The Newborn Brain: Neuroscience and Clinical Applications* (2nd Edition)

Cebula, K., **Moore, D.G.** & Wishart, J. (2010) La cognición social en los niños con síndrome de Down. *Revista Síndrome De Down*, 27 26-46.

Cebula, K., **Moore, D.G.** & Wishart, J. (2010) Social Cognition in Children with Down's Syndrome: Challenges to Research and Theory Building. *Journal of Intellectual Disability Research*, 54, 113-134.

Moore, D.G., Turner, J.J.T., Parrott, A.C, Goodwin, J.E., Fulton, S.E. Min, M.O., Fox, H.C., Braddick, F.M.B., Toplis, A., **Axelsson, E.L.**, **Lynch, S.**, Ribeiro, H., **Frostick, C.J.** & Singer L.T. (2010) During pregnancy, recreational drug-using women stop taking ecstasy (MDMA) and reduce alcohol consumption but continue to smoke tobacco and cannabis. *Journal of Psychopharmacology* 24(9) 1403-1410

Tomalski, P. & Johnson M.H. (2010). The effects of early adversity on the adult and developing brain. *Current Opinion in Psychiatry*, 23(3), 233-238.

Applied & Professional Research Group (APPRG)

GROUP RESEARCH INTERESTS

The applied and professional group consists of nearly thirty colleagues across the school with diverse interests, from risk and decision making, to career choices to educational coaching.

The challenge for group members is translating these interests into conference presentations and peer review journal papers and many colleagues have been busy doing this with an eye towards the forthcoming REF. The Group's aims over the coming three years will be ensuring colleagues are able to translate their ideas and interests into REF-able contributions.

Research activities in the group reflect teaching interests and there have been some excellent examples of collaboration between group members, such as the recent *Careers Transition* booklet which drew members of the coaching team together with careers colleagues.



Dr Christian van Nieuwerburgh is the new APRG Coordinator

Focal research interests of the group

The group contains interests which reflect various specialisms which include: careers guidance, organisational psychology, educational psychology, coaching, counselling, international development and mentoring; all of which are reflected by journal submissions from colleagues during 2010.

The group welcomes **Dr Christian van Nieuwerburgh** as the Applied & Professional Research Group Co-ordinator. We would like to thank **Prof Irvine Gersch** for his prior work as group coordinators while congratulating **Dr Van Nieuwerburgh** on his new role.

IMPACTS, GRANTS & COLLABORATIONS

External Consultancy

External consultancy work has been a major success area for the Group, with colleagues such as Mark Holloway actively engaging in knowledge transfer activity with external organisations and also securing training projects within the University to train colleagues in appraisals, mentoring and leadership. Projects in 2010 included:

- Leadership Coaching skills (2 day consultancy) for St Christopher's School, Southend-on-Sea (**Christian Van Nieuwerburgh**)
- Bow Health Network – Teambuilding & Coaching Programme (**Mark Holloway** £9,900)
- Department for Children, Schools & Families: Structured Conversation Workshops (**Mark Holloway** £24,000)
- UEL: Staff Development Review Workshops (**Mark Holloway** £7,200)
- UEL: Mentoring Training Workshops (**Mark Holloway** £4,800)
- UEL: Staff Development Review Workshops (**Mark Holloway** £7,200)
- UEL: Mentoring Training Workshops (**Mark Holloway** £4,800)
- UEL Career Development Workshops (**Mark Holloway** £1,200)
- Professional supervision to the School (**Martyn Baker** £1,200)

Selection of Current Live Bids

In addition during 2010 colleagues secured funding from the following sources for projects:

- Challenge Fund for Knowledge Transfer (**Christian Van Nieuwerburgh** £15,000)
- Early Career Researcher Awards, 'The impact of coaching on the development and career progression of aspiring school leaders from black and ethnic minority backgrounds' (**Christian Van Nieuwerburgh** £2,000)
- Challenge Fund Career Transition project (**Jonathan Passmore & Nelica La Gro** £9,000)

Group Members

Core Staff

Dr Martyn Baker
Prof Rowan Bayne
Dr Patrizia Collard
Dr Mark Fox
Dr Kendra Gilbert
Prof Irvine Gersch
Dr Carla Gibbes
Mark Holloway
Gordon Jinks
Dr Alan Labram
Nelica La Gro
Dr Ho Chung Law
Prof Rachel Mulvey
Max O'Neill
Dr Christian van Nieuwerburgh
(Coordinator)
Dr Nash Popovic
Prof John Radford (Emeritus)
Donald Ridley
Dr Mary Robinson
Janice Smith
Dr Melanie Spragg
Mark Turner
Julia Yates
Dr Dori Yusef

Selected Publications

Baker, M. (2010). A UK perspective on how the views of their local faith community and those of their mental health staff team, are experienced by Christian service-users. *Journal of Psychology and Christianity*, 29(3), 240–251.

Bayne, R. and Jinks, G. (2010). How to Survive Counsellor Training. An A-Z guide, Basingstoke: Palgrave Macmillan.

Carelse, B., **Gersch, I.S.**, Cameron, S., & Lloyd Bennett, P. (2010). Mindfulness and educational psychology: a review of two conferences. *DECP Debate*, 136, 21–30.

Lloyd Bennett, P., Cameron, S., **Gersch, I.S.**, & Carelse, B. (2010). Spirituality in education: is it worthwhile? *DECP Debate*, 136, 31–35.

CONFERENCES & INVITED TALKS

During 2010 colleagues delivered more than 50 conference papers around the world including papers in Portugal, Egypt, USA and Poland. Rather than provide a full list we have pick out half a dozen examples to show the range and type of work being undertaken within this area by members of the group:

Dr Mark Turner 'Insight for Educational Psychologists from two new pieces of research with parents who have a child diagnosed with an autistic spectrum condition.' Association of Educational Psychologists Annual Conference (Liverpool, 2010).

Dr Christian Van Nieuwerburgh 'The development of peer coaching skills in primary school children in years 5 and 6' at the World Conference on Learning, Teaching and Administration (Cairo, Egypt, 30 October 2010).

Dr Christian Van Nieuwerburgh 'Coaching and mentoring in education' at the 17th European Mentoring and Coaching Conference (Dublin, 20 November 2010).

Dr Christian Van Nieuwerburgh 'How we know that coaching works: An evidence-based review' at the Latest Innovations in Coaching Conference (South Wales, 7 March 2011)



Also, as the Chair of the BPS Special Group in Coaching Psychology, **Dr Ho Chung Law** was invited to present a Keynote paper in December at the 1st International Congress of Coaching Psychology in London. Please see attached www.sgcp.org.uk for details. This follows on from Dr Law's successful election as the acting treasurer for the new BPS section – Community Psychology.

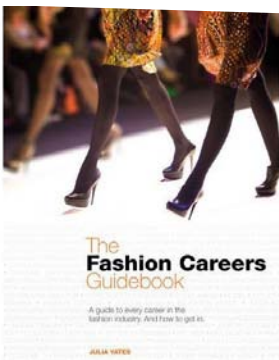
GROUP NEWS



Prof Rachel Mulvey's book 'Brilliant Graduate Careers' which was written with Dr. Judith Done at the University of Chester. The book was published in May of this year by Prentice Hall and is available on the Amazon website, with only a handful of copies still in stock at the time of writing. Prof Mulvey follows her literary success with professional achievements. Rachel was recently awarded Chartered Psychologist status and has also achieved Associate Fellow of the British Psychological Society status. Congratulations Rachel!

Progress on the Applied Psychology book being edited by **Gordon Jinks** and **Prof Rowan Bayne** continues with good progress. Colleagues will be sharpening fingers for writing into the summer period. **Dr Christian Van Nieuwerburgh** is also putting the finishing touches to his book on *Coaching in Education* due for publication in 2011 with Dr Jonathan Passmore. This will be the first title in this area and will be used as a core text for the coaching in education module on the MSc Coaching Psychology programme.

Dr Sharon Cahill has recently won a research proposal with the Association of Chief Police Officers (ACPO). £5,000 has been awarded to conduct an analysis of police vehicle accident data while on emergency response. The proposal builds on previous research projects with the Met Police and British Army Driving School.



Julia Yates also has a new book on the shelves for 2011 following 15 years of careers consultation for the University of Arts (London). 'The 50 Best Jobs in Fashion', published by A & C Black Publishers should be available on Amazon from September and helps students find career paths in what can be a daunting industry.

Selected Publications

Gilbert, K., Cahill, S., Lawrence, J., & Mulvey, R. (2010). Managing unemployment: resilience training for long term unemployed. London: University of East London.

Passmore, J., **Holloway, M.** & Rawle-Cope, M. (2010). MBTI types and executive coaching: In search of a relationship. *Counselling Psychology Quarterly*. 23(1). 1-16.

Barnes, A. & **La Gro, N.** (2010) Using ICT: a step change in career guidance or a sop to the twittering classes? In H. Reid (Ed.), *Constructing the future: career guidance for changing contexts*. Stourbridge: ICG.

Law, H. (2010). An Asian perspective on leadership coaching: Sun Tzu and the art of war. In J. Passmore (Ed.), *Leadership coaching* (pp. 93–114). London: Association for Coaching & Kogan Page.

Mulvey, M.R. (2010). *Training for career guidance practice: the higher education route*. Parliamentary Task Force on the Careers Profession: Task Force Paper 6.

Van Nieuwerburgh, C. (2010). A commentary on 'Holism in sports coaching: beyond humanistic psychology' *International Journal of Sports Science and Coaching*, 5(4), 463–464.

Briggs, M. & **Van Nieuwerburgh, C.** (2010) "The development of peer coaching skills in primary school children in years 5 and 6". *Procedia - Social and Behavioral Sciences*.

Briggs, M., & **Van Nieuwerburgh, C.** (2011). Ways of working. *Coaching: An International Journal of Theory, Research and Practice*, 4(2), 163–167.

Brain, Cognition & Behaviour (BCBRG)

GROUP RESEARCH INTERESTS

The Brain, Cognition and Behaviour Group meet regularly within the School of Psychology, so that staff and postgraduates can discuss ongoing research and give informal talks.

They are a productive and enthusiastic group, their efforts and expertise having been recognized within the most recent Research Assessment Exercise 'RAE 2008'.

Drs Spiller, Stone, Thoma and **Vitkovitch** work as a team in aspects of visual cognition in healthy adults (mental imagery, object, word and face processing). Dr. Stone also researches emotional responses to the perception of disfigured faces and paranormal beliefs.

Dr Jansari for a number of years has worked with adults with memory and face processing disorders, contributing to both theory and applied issues and he has developed methods of assessment and rehabilitation using virtual reality equipment (JAAM).

Dr Jones Chesters works with elderly individuals, with research interests in early-onset/atypical dementia (pathology, classification and social context), cross-cultural aspects of neuropsychological assessment, and disorders of social language, pragmatics and cognition. He is currently working on a technology project with **Dr Vitkovitch** and **Tony Leadbetter**, with the aim of improving assessment of specific cognitive impairments.

Ros Watling is actively interested in visuospatial cognition, in particular the impairments found in a neurological condition referred to as visuospatial extinction. She is researching these effects both in healthy adults and in neurological patients.

Dr Dickins has set up the Human Evolutionary Behavioural Science Lab. His research includes the theoretical implications of the application of evolutionary biology to the behavioural sciences, as well as ecological models of fertility scheduling in modern human populations; and sex and sexual orientation.

IMPACTS, GRANTS & COLLABORATIONS

Dr Ashok Jansari has submitted a bid for **£15,724** to the British Academy Association of Commonwealth Universities for an international collaborative project grant with neuropsychologists in Sydney in 2011. The bid focuses on the validation of a virtual reality assessment tool.

Dr Volker Thoma has submitted a bid for **£18,013** to Eclipse Gas & Power Ltd for a contracted research project investigating self-regulation and decision-making.

Rosamond Watling has been successful in a bid for a travel grant from the Guarantors of Brain organisation for a conference in the Netherlands. **Ros** also attended the Human Brain Anatomy course at University College London on 18-20th July this year.

Dr Mary Spiller has submitted a bid of **£3,381** to the Experimental Psychology Society (EPS) small grants scheme. The bid is for synaesthesia research and is entitled, 'Do you need to 'see it' to 'feel it'?'

Collaborations

Dr Tom Dickins co-edited a special issue of *Philosophical Transactions of the Royal Society B* with co-authors Gillian R. Brown, Rebecca Sear and Kevin N. Laland. The special issue put the team's activities in the European Human Behaviour and Evolution Association (see <http://www.ehbea.com>) on a broader map. Dr Dickins also recently collaborated in the production of the Galton Institute conference on 'Epigenetics: Where life meets the genome', which was held in November at the Royal Society. Dr Dickins was one of four organizers, as a Fellow, Trustee and member of the Council.

Dr Ashok Jansari has recently returned from a research trip to Australia. The trip resulted in exciting investment return opportunities with no less than thirteen possible collaborations relating to Dr Jansari's virtual reality executing functioning assessment tool. Possible collaborators include the president of the Australian Society for the Study of Brain Impairment, as well as researchers from the biggest children's hospital in Sydney. During the visit Dr Jansari gave talks at universities in Brisbane, Melbourne and Wellington; as well as two invited talks at a hospital in Sydney on amnesia research and rehabilitative prosopagnosia. There was also promotion of Dr Jansari's currently involvement for Lord Kamlesh Patel's India Working Party.

Group Members

Core Staff

Dr Tom Dickins
Dr Ashok Jansari
Dr Matthew Jones Chesters
Dr Anita Potton
Dr Anna Stone
Dr Volker Thoma
Dr Paul Penn
Dr Mary Spiller
Dr Melanie Vitkovitch (Coordinator)
Rosamond Watling
Prof David Rose (Emeritus)
Prof Brian Clifford (Emeritus)
Dr Ernie Govier (Honorary Research Fellow)

PhD Students

Elisa Cooper
Anna O'Reilly
Sima Sandhu
Dieneke Hubbeling
Hayley Noakes
Elley Wakui

Selected Publications

Nettle, D., Coall, D.A., & Dickins, T.E. (2010.) Birthweight and paternal involvement affect the likelihood of teenage motherhood: Evidence from the British National Child Development Study. *American Journal of Human Biology*, 22, 172-179.

Sear, R. & Dickins, T.E. (2010.) The Generation Game is the Cooperation Game (Commentary). *Behavioral and Brain Sciences*, 33, 34-35.

Govier, E., Diamond, M., Wolowiec, T., Slade, C. (2010). Dichotic Listening, Handedness, Brain Organization, and Transsexuality, *International Journal of Transgenderism*, 12: 144-154.

Bate, S., Haslam, C., Hodgson, T.L., Jansari, A., Gregory, N., & Kay, J. (2010). Positive and negative emotion enhances the processing of famous faces in a semantic judgment task. *Neuropsychology*, 24(1), 84-89.

CONFERENCES & INVITED TALKS

Dr Vitkovitch delivered a talk on the 'Semantic features and word naming: Do event-related potentials vary according to the number of features elicited by an object name?'. The talk took place at the 15th International Organisation of Psychophysiology World Conference, September last year.

Dr Tom Dickins was invited to address the Centre for the Study of Cultural Evolution (CSCE) at Stockholm University. His talk was entitled 'Cultural Change and Evolution' and argued that models of cultural evolution did not conform to models of biological evolution.

Dr Vitkovitch attended the Homerton NHS Trust Research & Development Conference in November. The conference had a number of papers interesting from a psychological perspective including talks on HIV infection rates and possible factors influencing test take-up, as well as a number of qualitative studies.

Dr Dickins took part in the Child and Adolescent Health Research Symposium at the Princess Margaret Hospital for Children in Western Australia, on 27th – 29th October last year. The title of the symposium was, 'Childhood antecedents of actual and intended early reproduction in a birth cohort of British women.'

Dr Dickins also presented at the Human Behaviour and Evolution Society Annual Conference in Oregon USA, on 16th – 20th June 2010. The title of the talk was, 'The early lives and physical development of British teenage mothers: Evidence from the National Child Development Study.'

Dr Ashok Jansari attended the 3rd Verona Neurosurgical Symposium on 28-29 January 2011 where he spoke on 'JAAM © : Using Virtual Reality to Assess Executive Functions – A Novel Method'.

Dr. Spiller and **Dr Jansari** are presenting 'Neuronal activity in response to hearing words: a magnetoencephalography (MEG) study of frampheme-colour synaesthesia', at the American Synaesthesia Association, Vanderbilt University, Tennessee.

GROUP NEWS

UEL's Synaesthesia Research Team, founded in 2003, proudly hosted the annual UK Synaesthesia Association (UKSA) conference this year. The conference was organised by **Drs Mary Spiller** and **Ashok Jansari** and took place on March 26-27th. The event was a great success and brought together researchers, artists and synaesthetes from many different countries around the world. Mary and Ash have both presented papers at previous UKSA conferences (Sussex, Edinburgh, Oxford, and UCL) and being invited to host this year's conference was therefore a fantastic opportunity which continued to develop the international standing of UEL's Synaesthesia Research Team. You can follow the team on twitter @uelsynaesthesia and on Facebook by following the **UEL SynLab** page.

Dieneke Hubbeling has successfully published a letter entitled, 'Alternate Explanation for fMRI Findings in Social Phobia' in the American Journal of Psychiatry. The American Journal of Psychiatry rejects approximately 90% of letters and consistently has an impact factor of >10. However they accepted Dieneke's letter which argued that recent fMRI findings in social phobia could have an alternative explanation, namely sensitivity to disgust and not sensitivity to embarrassment.

Congratulations to Dr Volker Thoma who has just had a publication accepted on 'Object Representations in Ventral and Dorsal Visual Streams' in *NeuroImage*. The journal is well respected with a five year impact factor of 7.1 at the time of writing. This success follows a related talk and poster presentation at the British Association of Neuroscience conference in September last year on which was held in Bristol.

BCBRG bids **Elliott White** farewell as he leaves UEL to start a Clinical Doctorate at Salomon's in Kent. Elliott had been appointed as a Research Assistant on **Drs Thoma's** and **Anderson's** study on financial trader's decision making. The study began in April last year and examines the role of individual differences and cognitive styles on trading performance with the second phase of the project examining how emotional regulation interacts with other decision making processes. Elliott has also been working with **Dr James Walsh** on a university wide project examining doctoral student's experiences and expectations of research supervision.



Dr Ashok Jansari (far left) hosts the UEL Brain Awareness Day Conference with Sandra (left), Clare (middle) and David (right)

The UEL Brain Awareness Day on 16th March 2011 was the biggest yet held with over 300 people attending **Dr Jansari's** public lecture entitled 'The Life of Brian (the Brain!)'. This was followed by a reception with refreshments while visitors looked at stalls set up by organisations that work in brain-related areas (e.g. Headway, the Epilepsy Trust & SANE). Visitors also had the opportunity to take apart physical models of the brain and the evening ended with a 'Question Time' panel discussion, with Dr Jansari and three of his research participants, on the everyday experiences of living with brain damage. The evening was a huge success with members of the public, individuals who work in the field, as well as UEL students and staff, being able to get an insight into the field.

Selected Publications

Jansari, A. (2010). In search of an ecologically valid measure of the dysexecutive syndrome: can virtual reality help rehabilitation? *Journal of Rehabilitation Medicine*, 42(4), 399.

Jansari, A.S., Davis, K., McGibbon, T., Firminger, S., & Kapur, N. (2010). When "long-term memory" no longer means "forever": analysis of accelerated long-term forgetting in a patient with temporal lobe epilepsy. *Neuropsychologia*, 48(6), 1707–1715.

Weber, M., Ring, C., Jansari, A., & Edwards, M.G. (2010). Do aggression and executive function influence sport concussion? *Brain Injury*, 24(3), 299.

Stone, A.M. (2011). Attentional effects of masked famous faces (but not names) and subjective evaluations of a target person. *Perceptual and Motor Skills*, 112 (2), 451–476.

Thoma, V., & Henson, R.N. (2011). Object representations in ventral and dorsal visual streams: fMRI repetition effects depend on attention and part-whole configuration.

Vitkovitch, M., Cooper-Pye, E., & Ali, L. (2010). The long and the short of it! Naming a set of prime words before a set of related picture targets at two different intertrial intervals. *European Journal of Cognitive Psychology*, 22(2), 161–171.

Watling, R. (2010). Lectures: the good, the bad and the boring. *PsyPAG Quarterly*, 74, 23–24.

Health Psychology Research Group (HPRG)

GROUP RESEARCH INTERESTS

The members of the Health Psychology Research Group (HSPRG) examine health behaviour and outcomes from a combination of psychological, social and biological perspectives, using a variety of methods (whether quantitative or qualitative).

The Group contains the Chronic Illness Research Team (led by **Prof Christine Dancey**), which examines the psychosocial concomitants of irritable bowel syndrome and more latterly of chronic fatigue syndrome. The Group also contains the Recreational Drugs Research Team (led by **Dr Kirstie Soar**): their work focuses on the psychological precursors and consequences of recreational drug use and abuse on mental and physical health, whether it be nicotine (notably, **Dr Lynne Dawkins's** work), ecstasy or other substances which have psychogenic effects.



Dr Kirstie Soar

Also, in the Group, a positive psychology approach is employed (by **Dr Ilona Boniwell**) to health-related research, with a focus on measuring and understanding psychological well-being. Other active research interests of Group members include: post-traumatic growth among female breast cancer survivors (**Dr Kate Hefferon**); psychological aspects of prostate cancer and lower urinary tract symptoms (**Dr Ken Gannon**); individual differences in rebelliousness (**Prof Mark McDermott**) and in mindfulness (**Dr James Walsh**) as they relate to health behaviour; the effects of poly-drug use on pregnant women (**Dr John Turner**); and, antisocial behaviour and mental Health (**Dr Amanda Roberts**).

The group welcomes **Dr Kirstie Soar** who continues the work of **Prof Mark McDermott** as the new Group Coordinator.

Group Members

Core Staff

Elizabeth Attree
Dr Ilona Boniwell
Prof Christine Dancey
Dr Lynne Dawkins
Dr Gayani Gamage (Researcher)
Dr Ken Gannon
Dr Kate Hefferon
Prof Mark McDermott
Dr Amanda Roberts
Dr Kirstie Soar (Co-ordinator)
Dr John Turner
Dr James Walsh

PhD Students

Paula Booth
Melika Ghahramanzadeh
Stephanie Lynch
Margherita Milani

IMPACTS, GRANTS & COLLABORATIONS

External Grants & Collaborations

Prof Christine Dancey, **Elizabeth Attree** and **Gordon Jinks** are in collaboration with Prof Peter Irving (Guys & St. Thomas's NHS Trust) on a Living with IBD submission to NACC for c£90,000. The bid was submitted March 2011 with UEL as the lead institution.

On 8th June 2011, **Prof Christine Dancey**, **Elizabeth Attree** and Dr Megan Arroll, in collaboration with Senior Visiting Research Fellow Dr. Amolak Bansal (Epsom & St. Helier University Hospitals NHS Trust), submitted an MRC proposal for £865,519. The project bid was entitled, 'Assessment of NK cell function and T and B cell memory in relation to cognitive dysfunction, stress and sleep dysfunction and correlation with parameters of viral infection in participants with the Chronic Fatigue Syndrome' with Dr. Bansal as the lead applicant.

Dr Lynne Dawkins and **Dr John Turner** continue to collaborate with Totally Wicked E-Liquids and The Electronic Cigarette Company. Both companies are currently supplying electronic cigarettes for a number of research projects at UEL.

Dr Ken Gannon has applied to the CRUK Population Research Committee, in collaboration with Aberdeen University and medics in Newcastle and London, for funding for a study entitled 'Factors associated with participation or non-participation in early detection of prostate cancer by Black African and African Caribbean men: A systematic review'.

Dr Ilona Boniwell and Lucy Ryan (see Mindspring.uk.com) have put their finishing touches to their book entitled, 'Positive Education'. The publisher is expected to be Open University Press who are currently working on the cover designs with a print run expected in the next 2 to 3 months.

Dr Lynne Dawkins has begun an international collaboration with Dr Lee Hogarth who has recently accepted a lectureship at a university in Australia. The collaboration will involve engaging UEL MSc students in experimental research, leading to a paper, with a future collaborative grant application forthcoming.

External Consultancy

Prof Mark McDermott, Dr Megan Arroll and **Rosamond Watling** have been liaising with a local borough to carry out, over the summer of 2011, a £10K evaluation of an 'Adizone' outdoor gym on the health and well-being of its users. Data collection is currently under way.

CONFERENCES & INVITED TALKS

Prof Christine Dancey and **Elizabeth Attree** visited Marburg University to talk about the work of CIRT (the Chronic Illness Research Team) with Professor Winfried Rief's health psychology team

Dr Ilona Boniwell was invited a workshop by the Young Foundation. The workshop will take place in London on the 8th and 9th December and was titled, '*Resilience education*'.

Dr Lynne Dawkins recently presented a paper: '*Relapse to smoking during unaided cessation: Clinical, cognitive, and motivational predictors*' at the Society for Research in Nicotine and Tobacco's annual conference in Toronto. Lynne has also been accepted to present as part of a symposium at the BPS Annual Conference in Glasgow on 4-6th May. The title of the symposium is 'Enhancement or Impairment? The effects of what we consume on our cognitive processes'.

Dr Ilona Boniwell was keynote speaker on resilience and Well-Being in the classroom at the Conference on Positive Education at Wellington College on 14th October. Dr Boniwell also invited to present on positive psychology in practice at the Gelukcongress in Brussels and Rotterdam on 29th and 30th September.

Stephanie Lynch presented '*Psychotic-like traits and cognitive functioning in regular cannabis users*' at the BPS Postgraduate Conference in London on April 2011 and at the Drugs Misuse Post-graduate Symposium on 11th July at Oxford Brookes University. The symposium included a range of attendees from those who had just been awarded PhD scholarships, through to post-viva. This friendly event explored the PhD experience and with a keynote speech from our very own Prof John Radford (winner of the 2011 BPS Lifetime Achievement Award for contribution to the teaching of psychology).

PhD students **Melika Ghahramanzadeh** presented at the 12th European Congress of Psychology from 4th-8th July in Istanbul, Turkey.

Dr Kate Hefferon presented a paper at the 5th European Conference on Positive Psychology, Copenhagen, Denmark., entitled '*Breast cancer, physical activity and well being: a large scale qualitative study.*'

From the 16-20 February, **Dr Lynne Dawkins** attended the Society for Research on Nicotine and Tobacco conference in Toronto, Canada; where she presented findings on a recent paper, with Dr Jane Powell, on cue reactivity and relapse prediction.

GROUP NEWS



Dr Gayani Gamage

Gayani Gamage submitted her post-viva corrections to her PhD early in 2011 and in April learned that they had been accepted by the external examiner. Congratulations to Gayani. Prof. Mark McDermott was Gayani's Director of Studies with Dr James Walsh and Dr Ken Gannon as 2nd supervisors. Gayani's thesis was entitled, '*The role of message framing and issue-involvement in promoting physical activity among sedentary university students*'.

Many congratulations to **Margherita Milani** who successfully defended her PhD with minor corrections. Dr John Turner is her Director of Studies. Also, Well done to **Francesca Elston** who has successfully transferred to her second year. Francesca is supervised by Dr Ilona Boniwell.

The School welcomes PhD student **Melika Ghahraman Zadeh**. Melika is researching '*Self-regulation and executive function in people with ME/CFS*' and is supervised by Prof Christine Dancey (DoS) and Elizabeth Attree.

Prof Mark McDermott, during a period of re-alignment (7th Feb—17th June 2011) has been working on four REF-submittable papers: one with **Ellen Boddington** on rebelliousness and resistance to health persuasion messages about cannabis use; one with **Ardiana Meha** on Kosovan-Albanian immigrants' adjustment to UK life; one with **Dr Vered Murgraff** and **Dr Gayani Gamage** on message framing, self-efficacy and alcohol use; and one with **Gayani Gamage** on message framing and exercise amongst sedentary university students.

Congratulations to **Dr Lynne Dawkins** who was recently awarded an intern from the UEL Summer Internship Scheme. The intern will work with the Recreational Drugs Team for 10 weeks, exploring the effects of response inhibition training on smoking behaviour.

Congratulations to **Dr Kirstie Soar** and **Dr John Turner** who were also successful in the UEL Internship competition. Their intern will work for 10 weeks, focusing on '*Eating and Ecstasy: an investigation into changes in eating patterns and behaviour following Ecstasy (MDMA) use.*'

Selected Publications

Boniwell, I., Osin, E., Linley, P.A., & Ivanchenko, G. (2010). A question of balance: examining relationships between time perspective and measures of well-being in the British and Russian student samples. *Journal of Positive Psychology, 5*(1), 24–40.

David, S., & **Boniwell, I.** (Eds)(2011). *Oxford Handbook of Happiness*. Oxford University Press.

Powell, J., **Dawkins, L.**, West, R., Powell, J., & Pickering, A. (2010). Relapse to smoking during unaided cessation: clinical, cognitive and motivational predictors. *Psychopharmacology*.

Hefferon, K., & Boniwell, I. (2011). *Positive psychology: theory, research and applications*. UK: Open University Press.

Hefferon, K., Grealy, M., & Mutrie, N. (2010). Transforming from cocoon to butterfly: the potential role of the body in the process of posttraumatic growth. *Journal of Humanistic Psychology, 50*(2), 224–247.

Gannon, K., Guerro-Blanco, M., Patel, A. and Abel, P. (2010). Reconstructing masculinity following radical prostatectomy for prostate cancer. *The Aging Male, 13*(4), 258–264.

Roberts, A.D.L., & Coid, J. (2010). Personality disorder and offending behaviour: findings from the national survey of male prisoners in England and Wales. *Journal of Forensic Psychiatry and Psychology, 21*(2), 221–237.

Moore, D.G., Turner, J.J.T., Parrott, A.C, Goodwin, J.E., Fulton, S.E. Min, M.O., Fox, H.C., Braddick, F.M.B., Toplis, A., **Axelsson, E.L., Lynch, S.,** Ribeiro, H., **Frostick, C.J.** & Singer L.T. (2010) During pregnancy, recreational drug-using women stop taking ecstasy (MDMA) and reduce alcohol consumption but continue to smoke tobacco and cannabis. *Journal of Psychopharmacology 24* (9) 1403-1410.

Psychology and Social Change (PSCRG)

GROUP RESEARCH INTERESTS

The core focus of the Psychology and Social Change Research Group is a commitment to research with an emphasis on social change. This is a broad overarching theme for the Group, and involves diverse and varied activity across theoretical and methodological arenas, and driven by a number of different topic areas. Central to research in the Group is to consider the psychological and the social as inseparable. To this end the Group supports a number of international and national collaborations, and members are involved in work across policy, applied and academic settings.

Key objectives are:

- ◆ To take an applied focus in using theory, research and methodology to impact on social change and quality of life.
- ◆ To develop interdisciplinary approaches that draw on a number of theoretical resources (social theory, process philosophy, critical psychology, feminist theory, embodiment and affect theory).
- ◆ To use and develop a range of methodological approaches including critical and discursive approaches, visual methodologies, spatial analytics.

The Group's current research priorities include the following.

- ◆ Therapeutic and psychiatric practice
- ◆ Health and reproduction
- ◆ Domestic and sexual violence
- ◆ Critical pedagogy
- ◆ Sexuality and intimate relationships
- ◆ Emotion and affect
- ◆ Social embodiment
- ◆ Psychology as 'process'

IMPACTS, GRANTS & COLLABORATIONS



Dr Nimisha Patel has submitted a joint application with the UEL School of Law to DFID (Department for International Development) to investigate 'What forms of partnership between non-State (customary, traditional and community-based) and State justice systems are effective in improving justice and security services to the poor and particularly women?'



Dave Harper was interviewed in a BBC documentary on Radio 4. Dave spoke on the 'The use of psychological research in the development of interrogation techniques'.

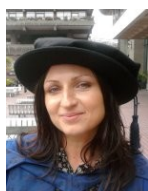
University Awards

£12,500 from School of Psychology (RAE2008 funding) 'Helping relationship counsellors support sexual minorities: A qualitative study of therapeutic engagement with open non-monogamy' (Mark Finn and Aneta Tunariu)

£10,312 from School of Psychology (RAE2008 funding) 'The impact of surveillance on everyday life', (**Dave Harper**, **Ian Tucker**, with **Darren Ellis** (UEL HSS))

£10,000 LEO bid: BME student attainment (**Pippa Dell**)

£10,000 LEO bid- BME & academic integrity (**Pippa Dell**)



From May 2010 **Dr Aneta Tunariu** and **Prof Irvine Gersch** have been consulting with Newham PCT on the development of an Emotional Resilience Curriculum (SPARK) Stage 2, for **£50,000**.

From February 2010 **Dr Aneta Tunariu** has been consulting with the South London and Maudsley Trust on the evaluation of the DIY Happiness Project (**£12,500**).

Group Members

Core Staff

Dr Bipasha Ahmed
Dr Irina Anderson
Dr Sharon Cahill
Dr Pippa Dell
Dr Mark Finn
Dr David Harper
Dr Helen Murphy
Dr Nimisha Patel
Prof Mark Rapley
Dr Miles Thomas
Prof Rachel Tribe
Dr Ian Tucker (**Coordinator**)
Dr Aneta Tunariu

PhD Students

Matthew Colahan
Patrick McKeown
Kirshen Rundle
Pia Lee-Wilson

Selected Publications

Finn, M. (2010) Conditions of freedom in practices of non-monogamous commitment. In M. Baker & D. Langdrige (Eds.) *Understanding non-monogamies*. London: Routledge

Harper, D. & Thompson, A. (eds). *Qualitative research methods in mental health and psychotherapy: An introduction for students and practitioners*. Chichester: Wiley.

Patel, N. (2010) Plus ca change, plus c'est la meme chose? Commentary on Turpin and Coleman. *Psychology, Learning and Teaching* 9 (2), 30-31

Patel, N. and Williams, A. (2010) Healthcare for torture survivors. *NHS Evidence- Ethnicity and Health*

Rundle, K. (2010) 'Presenting to an Ethics Committee.' In P. Sanders & P. Wilkins, *First Steps in Practitioner Research: A guide to understanding and doing research for helping practitioners*. Ross-on-Wye: PCCS Books.

CONFERENCES & INVITED TALKS

Matt Colahan, Dr Anita Tunariu and Dr Pippa Dell presented a talk on the understandings of relationship satisfaction from an interpretative phenomenological analysis perspective. The talk was held at the International Association of Relationships Research Biannual Conference in Herzliyah, Israel, on 22nd-26th July 2010.

Dr Pippa Dell, Esme Burton and Shani Ram du Sautoy presented a talk at the 'Innovation and excellence in Higher education' conference. This was the 5th UEL Annual Learning, Teaching & Assessment Conference and the talk focused on students' expectations and experiences of HE.

Darren Ellis (HSS), **Dr Dave Harper and Dr Ian Tucker** presented a paper on the 'Everyday experiences of surveillance and dataveillance technologies'. The paper was presented at the Political Economy of Surveillance Workshop in Milton Keynes last year. In 2010, Ian also presented a paper entitled, 'Everyday spaces of mental distress: The spatial habituation of home.' at the British Psychological Society History and Philosophy of Psychology Section Conference in Edinburgh.

Dr Mark Finn took part in a symposium at the Psychosocial Network Conference at UEL last year. Mark presented a paper on, 'Masculinities, identificatory imaginings and first-time fatherhood.'

Prof Rachel Tribe presented a paper and chaired a symposium at the Critical Link conference in Birmingham on 16th July, 2010.

Dr Nimisha Patel was invited to a conference in 2010 on 'Outcome evaluation with torture survivors: methodological, ethical and clinical challenges' at the International Council for Rehabilitation of Torture Survivors in Copenhagen. This was a closed conference for international experts on the subject of torture.

GROUP NEWS

Selection of current research by individual members:

Drs Mark Finn and Aneta Tunariu are conducting a qualitative study of therapeutic engagement with open non-monogamy. Their work will have professional impact with helping relationship counsellors support sexual minorities.

Drs Dave Harper and Ian Tucker are collaborating with Darren Ellis from HSS to investigate the impact of surveillance on everyday experience.

Dr Irina Anderson is researching counterfactual reasoning about sexual violence. Her study is entitled, 'A discourse analysis of front desk police officers' views of barriers to male rape reporting.'

Dr Pippa Dell is currently researching factors which influence BME student attainment in Higher Education Institutions.

Dr Nimisha Patel is evaluating the impact and use of medico-legal reports in the UK asylum determination process for survivors of torture.

Dr Ian Tucker is continuing his research on spaces of care in community mental health.



Dr Sharon Cahill is working on an evaluation of a programme by a charity called Act for Change which was funded by The Home Office. The programme aims to provide young people who are at risk of becoming involved in gang activity an opportunity to develop friendship skills, and gain an experience of applied empathy from which they can learn to resolve conflict creatively. Ultimately the aim is to prevent young people from becoming involved in gun, knife and gang related crime and break the cycle of re-offending among young people.

Selected Publications

Tribe, R. (2011). Migration and mental health: working across culture and language. In D. Bhugra & S. Gupta (Eds.), *Migrants and mental health*. Cambridge: Cambridge University Press.

Tribe, R. (2010). Mental health of refugees and asylum seekers. In D. Bhugra, S. Cross & R. Bhattacharya (Eds.), *Cultural topics in clinical psychiatry* (pp. 27–38). London: Royal College of Psychiatrists Press.

Lane, P., & **Tribe, R.** (2010). Following NICE 2008: a practical guide for health professionals: community engagement with local black and minority ethnic (BME) community groups. *Diversity in Health and Care*, 7(2), 105–114.

Lane, P., & **Tribe, R.** (2010). Towards an understanding of the cultural health needs of older gypsies: an introduction. *Working with Older People*, 14(2), 23–30.

Lane, P., **Tribe, R.**, & Hui, R. (2010). Intersectionality and the mental health of elderly Chinese women living in the UK. *International Journal of Migration, Health and Social Care*, 6(4), 34–41.

Tucker, I.M. (2010). Everyday spaces of mental distress: the spatial habituation of home. *Environment and Planning D: Society and Space*, 28, 526–538.

Tucker, I.M. (2010). Mental health service user territories: enacting 'safe spaces' in the community. *Health: An International Journal for the Social Study of Health, Illness and Medicine*, 14(4), 434–448.

Tucker, I.M. (2010). The potentiality of bodies. *Theory and Psychology*, 20(4), 511–527.

Satkunanayagam, K., **Tunariu, A.**, & **Tribe, R.** (2010). A qualitative exploration of mental health professionals' experience of working with survivors of trauma in Sri Lanka. *International Journal of Culture and Mental Health*, 3(1), 43–51.

Psychology Learning & Teaching (PLATRG)

GROUP RESEARCH INTERESTS

The members of the Psychology Learning and Teaching Group (PLATRG) carry out research and scholarly activity in the area of teaching and learning in Higher Education.

Members of PLATRG have undertaken several projects funded by the UEL Teaching Quality Enhancement Fund (TQEF). The first major project PLATRG embarked upon was to develop a strategy aimed at creating a pedagogical research infrastructure that could benefit our students and staff in the long term and ensure a legacy of learning and teaching enhancement in the School of Psychology. The strategy led to two major development projects for the school: the creation of a learning and teaching research lab, and the design and implementation of a pedagogical research database. We want our research into Learning and Teaching to have practical applications: to improve our students' performance and make the learning experience more enjoyable.



Chris Pawson

The group includes staff who are interested in using new technologies such as Second Life and Virtual Learning Environments (e.g. **Prof Christine Dancey**, **Dr Joy Coogan**, **Chris Pawson** and colleagues), the effects of drinking water in exams on students' performance (**Caroline Edmonds** and **Chris Pawson**); students' expectations and experiences of HE (**Dr Pippa Dell**) and research into the student experience (**Dr Anna Stone** and **Elizabeth Attree**).

The group welcomes **Chris Pawson**, who continues the good work by **Prof Christine Dancey**, as group coordinator. Also, congratulations to **Dr Joy Coogan** who becomes PLATRG deputy.

GROUP RESEARCH & COLLABORATIONS

- A recent European review of innovation in the teaching of Psychology in the EU cited the research of **Dr Joy Coogan**, **Chris Pawson** and **Prof Mark Davies**.
- **Prof Christine Dancey** and **Prof Rachel Mulvey** are developing and evaluating an online game designed to improve student employability.
- **Prof Christine Dancey** is exploring the impact of Second life on students engagement and achievement .
- **Dr Pippa Dell** and Winston Morgan received LEO funding for two projects exploring BME attainment / academic integrity / student expectations
- **Ian Wells** has been evaluating the use of pod- and vod-casting lectures on student engagement and achievement
- **Dr Anna Stone**, **Liz Attree** and post-graduate student **Stephanie Lynch** are investigating the factors that predict student engagement at undergraduate level 1.
- **Chris Pawson** has conducted a study exploring the effect of ocular stimuli on student behaviour. A recent study revealed a significant effect on student's behaviour relating to academic integrity when exposed to pictures of eyes.
- **Dr Caroline Edmonds** and **Chris Pawson** were awarded RAE funding and have conducted two studies exploring the effect of hydration on students' exam performance.
- The group welcomes PhD student, **Nesrin Gokcen**, who will be investigating a number of factors involved with the measurement of flourishing in HE and its relationship with student consumerism. Nesrin is supervised by Elizabeth Attree (DoS) and Prof Christine Dancey.

Group Members

Core Staff

Elizabeth Attree
Esme Burton
Dr Joy Coogan (Deputy)
Dr Pippa Dell
Dr Lara Frumkin
Dr Rachel George
Chris Pawson (Coordinator)
Prof John Radford (Emeritus)
Dr Anna Stone
Ian Wells

PhD Student

Nesrin Gokcen

Selected Publications & Conference Presentations

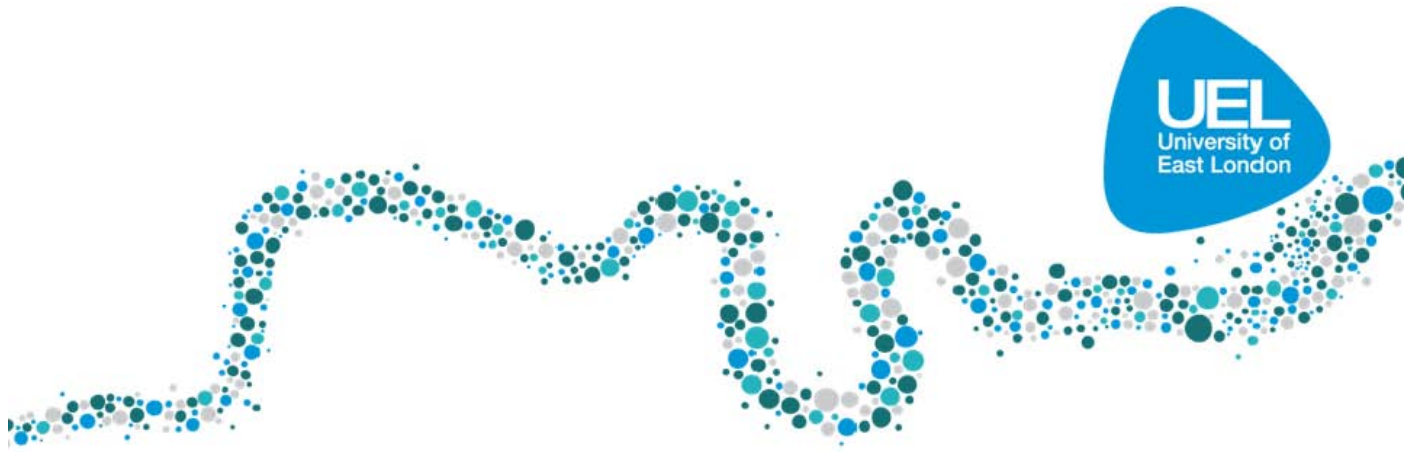
Dancey, C., Attree, E.A., Painter, J., Arroll, M., Pawson, C., McLean, G. (2011) Real Benefits of a second life. *Psychology Learning and Teaching*, 10 (2).

Coogan, J., & Pawson, C.J. (2009). The use of debating as an aid to effective widening participation in psychology. *Psychology Learning and Teaching*, 7(1), 23–27.

Pawson, C.J., & Cherniavsky, K.I. (2009). Weapons of mass deception: an active learning demonstration of attitudes, persuasion and the value of critical thinking skills. *Psychology Teaching Review*, 15(2), 62–73.

Dell, P. Investigating Psychology Students Engagement and Achievement. Presentation at the *UEL Learning and Teaching Conference*, 2010.

Dancey, C.P. Second Life Conferencing for students. *HEA Psychology. Learning and Teaching Conference*, 2010.



**FOR FURTHER INFORMATION ON UEL PSYCHOLOGY
RESEARCH GROUPS:**

[HTTP://WWW.UEL.AC.UK/PSYCHOLOGY/RESEARCH](http://www.uel.ac.uk/psychology/research)

University Awards

UEL Sabbatical Leave Scheme 2011-12

The School of Psychology has been awarded five sabbaticals from the University sabbatical scheme, as initiated by the Deputy Vice-Chancellor, Professor John Joughin. Ten sabbaticals were awarded across the university, so the School was successful in gaining 50% of them, in what proved to be a very competitive round of bids. The sabbaticals were awarded to: **Dr Ashok Jan-sari, Dr Bipasha Ahmed, Dr Caroline Edmonds, Dr Mark Finn and Dr Melanie Vitkovitch**. Many congratulations to them!

UEL Research Development Fund 2010-11

The School also celebrates success in the recent UEL Research Development Fund (RDF) Intern competition. This was a cross-university competition and the School was successfully awarded 11 out of 50 interns. All interns were allocated desks in the Psychology Research Suite where they worked for 10 weeks on a number of publishable research projects listed below. The School would like to congratulate those staff for their successful bids and also thank the interns for their hard work and contribution to research.

Dr Anna Stone



Intern: **Aaron Brace** (6 weeks) & **Chloe Faulkner** (4 weeks)

Factors influencing belief in alternative therapies

Dr Lara Frumkin



Intern: **Amanda Thompson**

The Impact of Regional and National Accents upon Evaluations of Eyewitness Testimony

Dr Bipasha Ahmed



Intern: **Bita Mansouri**

Exploring life context and sexual health understandings of young South Asians in East London

Dr Lynne Dawkins



Intern: **Surrayyah Hasna**

Can response inhibition training impact on cigarette craving and smoking-related behaviour: implications for quitting

Julia Yates



Intern: **Lorimar Campbell**

Exploring best practice in Employability & Enterprise

Dr Melanie Vitkovitch



Intern: **Mohammed Yaqub Ali** (6 Weeks) & **Chei Bradshaw** (4 weeks)

Object naming and speech recognition technology; an evaluation of the accuracy of computerised spoken name detection

Dr Pippa Dell



Intern: **Aja Kaiteh**

Female genital cutting amongst West African women: An exploration of the lived experience of a cut body



Dr Kirstie Soar & Dr John Turner

Intern: **Charlotte Schlosz**

Eating and Ecstasy: an investigation into changes in eating patterns and behaviour following Ecstasy (MDMA) use

Dr Virginia Lam



Intern: **Eliza James Corson**

British-ness in East London: Children's and Adolescents' National Identity in Anticipation of the 2012 Olympics



RAE Awards 2010-11

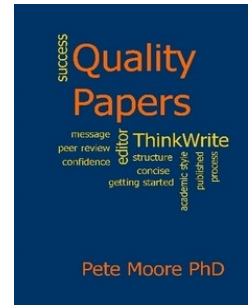


Matt Colahan

Matthew Colahan has been awarded a 4 month grant in aid of writing up from June to September 2011. Matthew is one of several long-standing Graduate Teaching Assistants in the School who play a vital role in teaching provision, while carrying out PhD research.

Dr Tom Dickins, Dr James Walsh and Dr Sharon Cahill were all awarded 0.4 Research Assistants on respective areas of expertise. **Jerry Gerza** (supervised by James Walsh) has been investigating 'The psychology of mindfulness and the manifold nature of suffering'; while **Alex Bogaardt** (supervised by Tom Dickins) has been researching paternal absence and its effects. **Stamatia Pagoni-Tetlow** (supervised by Sharon Cahill) has been working on the Evaluation of Act for Change Programme which aims to increase young people's social responsibility. The programme (funded by the Home Office) aims to provide young people who are at risk of becoming involved in gang activity an opportunity to develop friendship skills, and gain an experience of applied empathy from which they can learn to resolve conflict creatively.

School of Psychology **Staff** and **PGRs** have all been given a copy of Dr Pete Moore's 'Quality Papers' booklet. The booklet is based on Pete Moore's workshop on writing quality research papers which a number of staff and colleagues had attended and about which they had given very positive feedback. The booklet suggests a different model for writing research papers—one that encourages breaking down the writing process into bite-sized paragraphs that fits in with modern academics time constraints.



School Knowledge Exchange Events

On 22nd July, **Dr Tom Dickins** held a symposia event at the Stratford Campus on 'Evolutionary perspectives on public health'. **Dr Ashok Jansari** and **Dr Mary Spiller** held a symposia on 1st June entitled 'Neuro-imaging of synaesthesia — taking forward current Magneto-Encephalography (MEG) research and looking to the future'. Attendees included some very high level researchers from Sussex, Edinburgh, QMUL and York Neuroimaging Centre – including one of the world leaders in synaesthesia research. **Dr Kirstie Soar** held a symposia on 2nd June with **Dr John Tuner, Dr Lynne Dawkins, Dr Ashok Jansari** and **Dr Trudi Edginton** (Westminster) entitled, 'Using JAAM© to assess executive functioning in various drug using cohorts'; while **Dr Melanie Vitkovitch** held a symposia on 18th May with Dr Rob Hartsuiker (Ghent University) entitled, 'An afternoon on object naming; current issues, EEG data, and a paper!' The symposium was attended by a range of BCBRG staff and PGR students.



Mark Holloway (left) and Donald Ridley (right)

Mark Holloway & Donald Ridley hosted a Knowledge Transfer Partnership Event on 11th July at the Islington Art House. 12 staff from the School of Psychology took part and included Hamid Rehmaan and David Lewis of Ethnos Research & Consultancy, who described the research they did and discussed possibilities for collaboration. Four clusters of excellent ideas emerged from the day: *Identifying Skills & Qualities of Female Entrepreneurs, Flow and Foraging Behaviour of Ikea Customers, Decision Making in the Financial Services* and *Relationship Building in Education and Children's Services*. Project teams will work to refine these ideas and seek potential partners for KTP's and these teams will come together in September to share progress, along with Dr Terry Corner, our Regional KTP Adviser.



Prof Mark McDermott gave a talk in one of the three workshops at the UEL 2011 Research & Knowledge Exchange conference on 9 June 2011 about 'What the ESRC wants' as a member of the ESRC Peer Review College evaluating grant proposals. Two colleagues from other schools gave similar presentations in the same workshop on what the EPSRC and AHRC want (Prof Cornelia Boldyreff & Jil Nelmes respectively).

Mark Holloway is designing and running the following training programmes for UEL managers and staff:

- ◆ How to be an effective mentor
- ◆ Moving forward in your career
- ◆ Staff Development Review training for managers and staff
- ◆ A four day leadership development programme for first line supervisors and junior managers

Stop PRESS



Congratulations to **Dr Tom Dickins** who is now a full member of the Division of Teachers and Researchers in Psychology (BPS), a Chartered Psychologist (BPS) and an Associate Fellow of the British Psychological Society. Dr Dickins also recently completed 4-months as Acting School Research Leader, during Mark McDermott's period of realignment, and has recently returned from another successful fortnight of field studies at Lundy Island. Students (and staff) interested in visiting this beautiful island can find more details at: <http://dissentwithmodification.com>

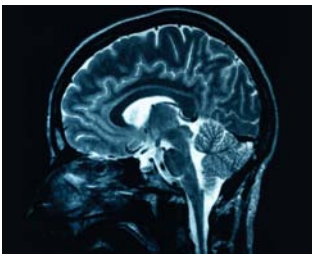
Dr Lara Frumkin is running an interesting online study on eyewitness testimony. The study explores interesting findings from previous research conducted in the U.S. and involves watching and listening to a 10 minute video clip. Participants who haven't taken part before can find out more by following this link: www.uelpsihology.org/eyewit



Dr Volker Thoma has submitted a bid in July in collaboration with the UEL Research and Development Support team of £199,962 to JISC (previously known as the Joint Information Systems Committee). The 'CoStar' project aims to implement and evaluate a technology framework which would allow collaborative work and feedback between students on formative assessments. If successful the project will impact on student satisfaction and feedback, as well as freeing staff time from some aspects of assessment administration and allowing more time for research.



Dr James Walsh hosted the 2010 Annual School of Psychology PGR Conference in late June. Seven PGRs delivered excellent talks on high quality research taking place within the School, with an impressive range of topics and methodologies. The Annual PGR Conference plays a vital role in learning how to speak in public academic audiences. There was a good turn out on the day and the School would like to thank colleagues for attending and showing their support.



Live Science?

Live Science is a project run by the Science Museum where scientists are invited through competition to carry out their research using Museum visitors as volunteers. You can take part in real scientific experiments to find out more about yourself. **Dr Ashok Jansari**, who took over as Treasurer for British Neuropsychological Society in October, has successfully won one of the Live Science places to run an experiment on face-recognition.

Dr Caroline Edmonds (IRCD) has published an online reply in the July issue of BMJ. The reply was in response to an article which argued that generally people don't need to drink more fluid than they currently do (see 'Waterlogged?' by Margaret McCartney, BMJ 2011; 343). Dr Edmonds argued that we need accurate prevalence data on hydration status before it is possible to argue that people are well hydrated or dehydrated and also that the published article was contrary to a recent advice from the British Nutrition Foundation and the European Food Safety Authority, as well as well established literature on dehydration and cognition: http://www.bmj.com/content/343/bmj.d4280/reply#bmj_el_266770



Both **Daniela Amadio** and **Michael Riches** will be leaving the Research and Development Support team and UEL this summer through the university voluntary scheme. Daniela was responsible for developing and maximising UEL's take up of EU research funds while Michael worked to generate and develop new business opportunities between UEL and industry. We are grateful to them for their past work on behalf of the School supporting research and wish them well for the future.

Researcher Focus



Clinical Psychologist, **Dave Harper** has co-edited a new book in collaboration Andrew Thompson from Sheffield University. The book was published in June 2011 and provides a user-friendly introduction to qualitative methods for mental health and psychotherapy practitioners. To find out more see:

http://eu.wiley.com/WileyCDA/WileyTitle/productCd-0470663731_descCd-tableOfContents.html

On 19th April, at 9pm on BBC Radio 4, the Nuffield funded “**Take a Look Baby**” (**TALBY**) study that the **IRCD** team are conducting in partnership with Tower Hamlets and Newham Children’s Centres was aired in a 10 minute item on ‘*All in the mind*’ with presenter Claudia Hammond. The broadcast may still be available via the BBC I-player for those who missed it, to listen see: www.bbc.co.uk/programmes/b010dp1p or to read an interesting article published in The Guardian: www.guardian.co.uk/education/2011/may/16/research-babies-eye-movements



The **Recreational Drugs Team** have a number of collaborative active research projects. Current research by individual members include:

- ◆ The effects of electronic cigarettes on mood and craving (with **Dr John Turner & Dr Amanda Roberts**. Data collection on-going)
- ◆ The effects of electronic cigarettes on cognition (data collection on-going).
- ◆ The effects of nicotine on executive functioning in smokers and non-smokers using JAAM (with **Dr Ashok Jansari**. Data collection on-going)
- ◆ An exploration of the effects of caffeine and expectancy on mood, attention and reward responsivity (with **Dr Caroline Edmonds**. Manuscript in preparation)
- ◆ Nicotine and Alcohol effects on emotional reactivity (with Prof Jane Powell (Goldsmiths). Manuscript under review)
- ◆ The effects of smoking on reward responsivity in depressed and non-depressed smokers (with Emma Sneesby & **Dr Kirstie Soar**). Data collection complete and awaiting entry & analysis)
- ◆ And, ‘Can response inhibition training impact on smoking behaviour?’ with Dr Matt Field (Liverpool) & **Dr Kirstie Soar** (currently in design phase)

Prof Christine Dancey and the **Chronic Illness Research Team (CIRT)** are presently carrying out research into the psychosocial and neurological aspects of the following illnesses:

- ◆ Mal de Debarquement Syndrome (MdDS) Menieres Disease and Chronic Motion Sickness (in collaboration with Professor Cha of UCLA Department of Neurology, Los Angeles.
- ◆ Epilepsy (and in CFS/ME in collaboration with Dr. A. Bansal (St. Helier Hospital, Sutton). This latter is a being carried out with PhD student Melika Ghahramanzadeh.
- ◆ Multiple Sclerosis: psychosocial factors involved in depression in people with MS.



The Sultan Ahmed Mosque (*Sultanahmet Camii*) was built 1609-1616 and is more popularly known as the Blue Mosque for the blue tiles adorning its interior walls.

PhD student, **Nesrin Gokcen**, attended the 12th European Congress of Psychology in Istanbul, Turkey on 4-8 July this year, where she presented an oral presentation on ‘*Beyond Consumerism: A mixed-methods approach to happiness in University students*’. The European Congress of Psychology is a biennial conference and this year’s conference featured 760 oral presentations, 1,800 posters and 35 invited speakers; as well as a range of symposia and roundtable discussions. The opening ceremony included an address from the current European Federation of Psychologists’ Associations (EFPA) President, Robert Roe, whose speech highlighted the importance of Psychology as a profession under the socio-historical factors in which the discipline emerged. There was also an excellent talk on time perspective from Phillip Zimbardo, as well as an interesting symposium entitled, ‘*Psychoquackery*’, which encouraged delegates to discuss the definition and utility of evidence based practice in Psychology today.

School of Psychology

Stratford Campus
Water Lane
London
E15 4LZ