



Welcome to the  
Disability, Dyslexia  
and Access  
Centre (DDAC)



**Student Services** at the  
University of East London

**UEL**  
University of  
East London

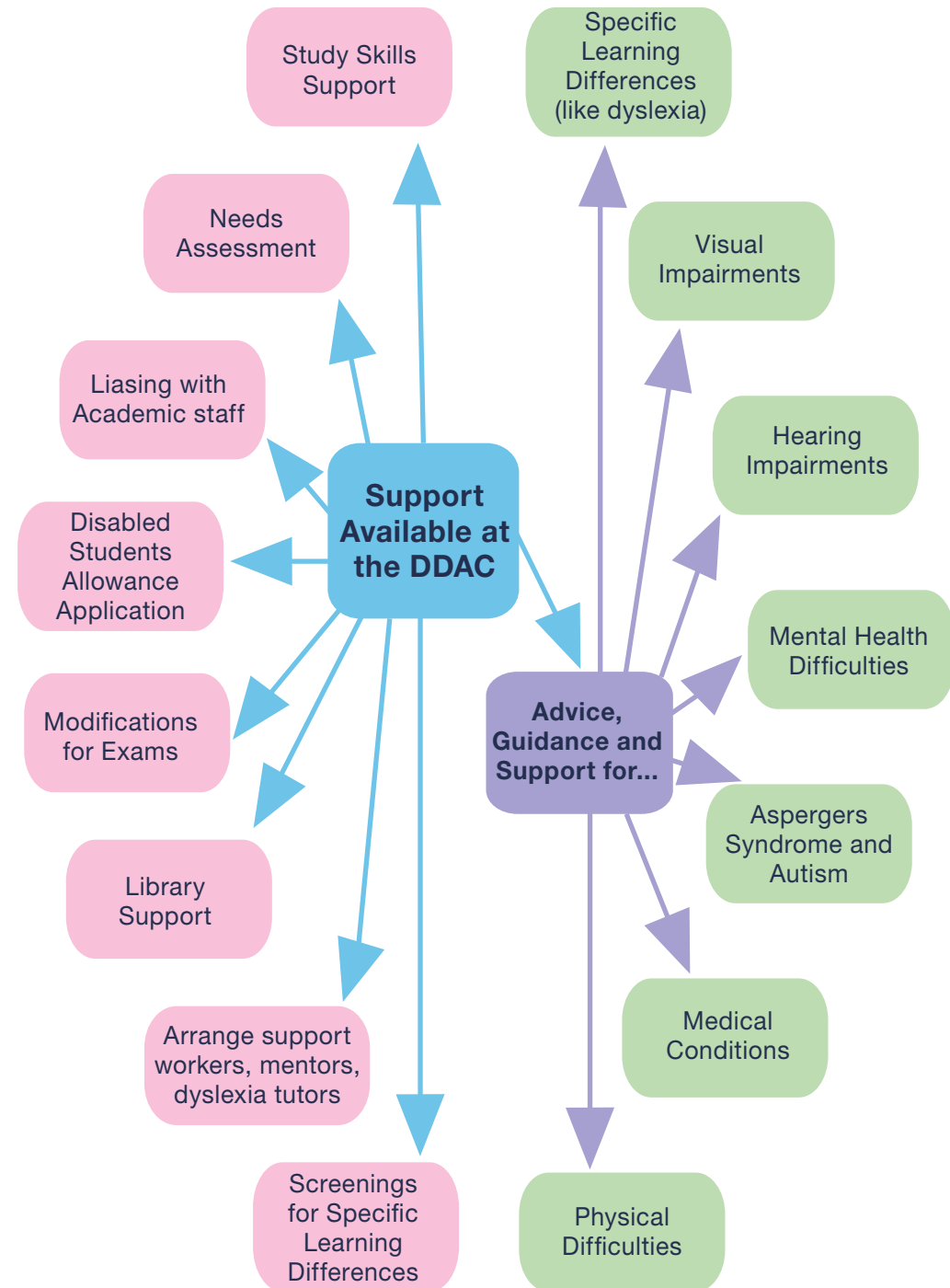
# Welcome to the Disability, Dyslexia and Access Centre (DDAC)!

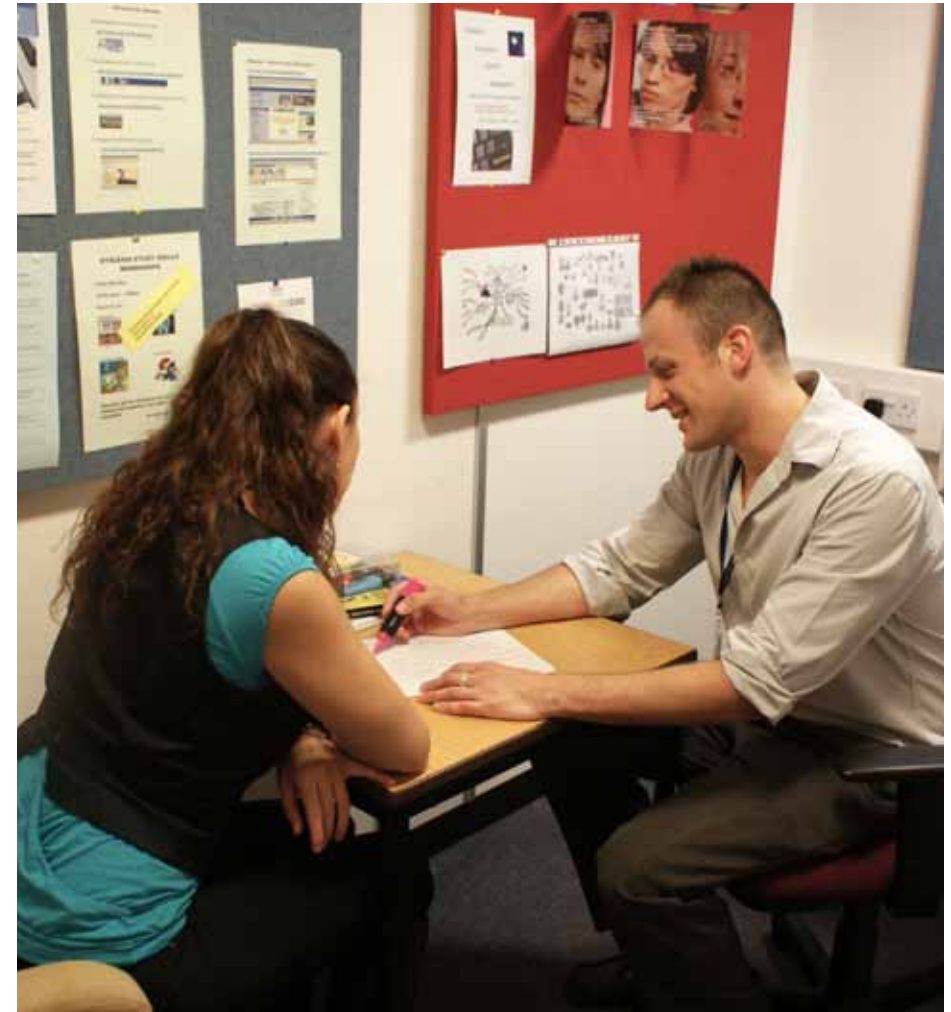
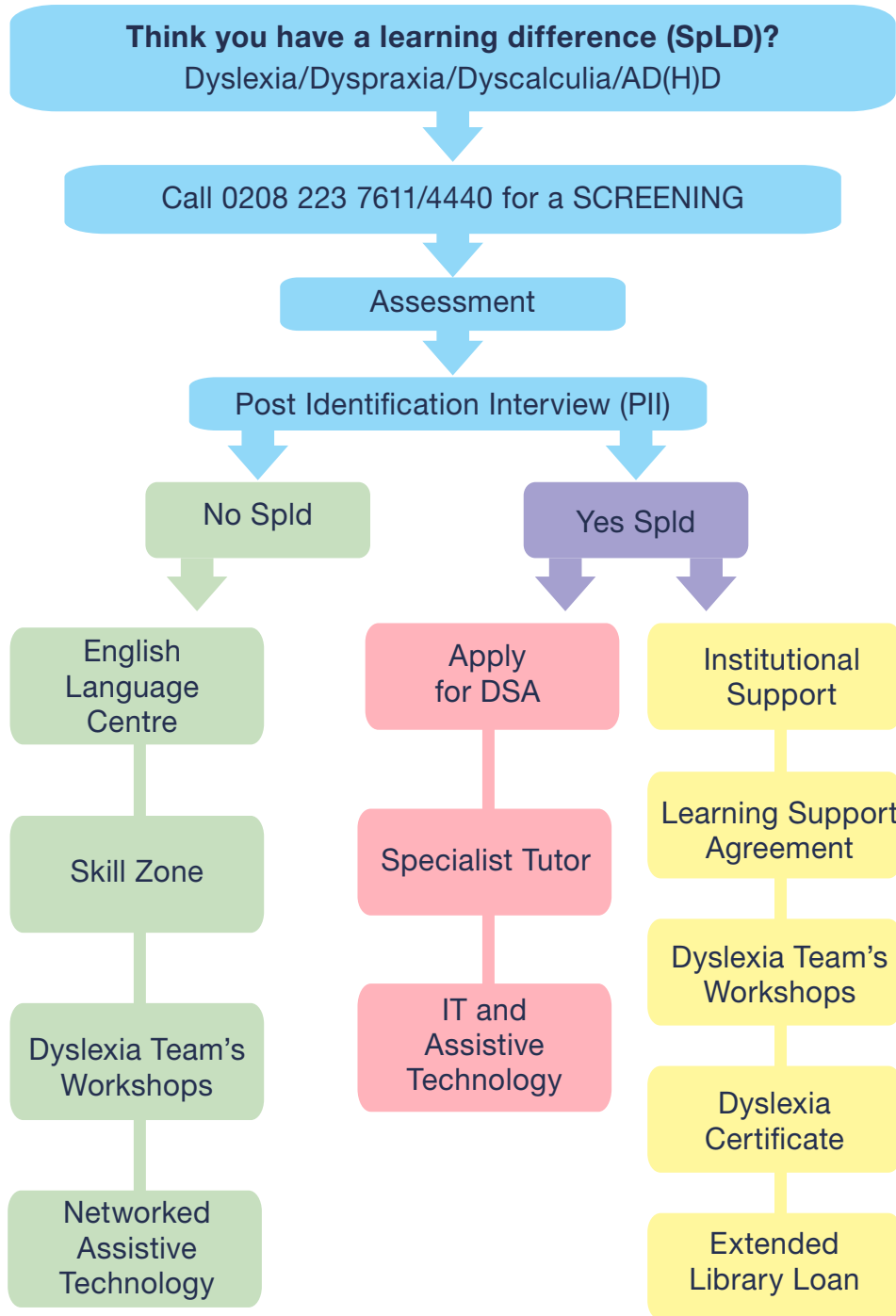
UEL is proud of its support for students, and we welcome applications from students with disabilities, including specific learning differences like dyslexia. All students are individual and we will work with you to arrange specific support for you.

We currently have over 2,000 students who have declared some form of disability and are being supported in their studies. We have a team of dedicated staff, covering all campuses, ensuring that students are able to access their studies as fully as possible. And, we are always looking for ways to become even better!



Stratford Student Services





We think it is important that potential students make an informed choice about how accessible we are and whether we offer a genuinely welcoming environment. That is why we work closely with DisabledGo

# The Disabled Students' Allowance (DSA)

The DSA is available to most full-time undergraduates as well as part-time and postgraduate students. If you are an EU or international student, you are not eligible for the DSA, but we do have a limited budget to support you. Please contact an advisor to discuss.

For students with disabilities and specific learning differences, this will be the main source of their support, whether equipment or human support. It is administered by your Funding Body.

There is a summary of the steps involved in applying for and receiving DSAs on the next page.

To book a Needs Assessment at the Regional Access Centre East London at UEL, or for more information, please call **0208 223 4118 / 4127**

DSA application forms available at [www.direct.gov.uk/studentfinance](http://www.direct.gov.uk/studentfinance)



1. Complete the DSA application form with evidence of your disability, mental health condition or specific learning difference. Send to Funding Body.

2. Your Funding Body will assess your application and send you a letter to let you know if you qualify for DSA or not.

3. Your Funding Body will ask you to attend a Needs Assessment to identify any specialist equipment and other support that you may need for your course.

4. Attend your Needs Assessment and receive a report which identifies any specialist equipment and other support you may need.

5. Your Funding Body will send you a letter to tell you whether the equipment and support listed in Needs Assessment Report can be paid for from DSA. They will also give you instructions on how to arrange this support.

6. You receive DSA!

Specialist Equipment



Human support



General Allowance



Travel costs (if applicable)



# Contact Us

For more information or advice, or to book an appointment with a Disability or Dyslexia Advisor, please contact us:

Campus	Location	Number
Docklands	Student Services Helpdesk Second Floor - North Building Docklands Campus University Way London E16 2RD	0208 223 7611
Stratford	Student Centre Stratford Campus Water Lane London E15 4LZ	0208 223 4440

Or you can email your queries to the Disability, Dyslexia and Access Centre directly at: **[ddac@uel.ac.uk](mailto:ddac@uel.ac.uk)**

Why not check out our website for more information?

**[www.uel.ac.uk/student-services/supportingyou/disability.htm](http://www.uel.ac.uk/student-services/supportingyou/disability.htm)**

**If you need this leaflet in an alternative format, please contact us!**

We look forward to working with you and we wish you much success in your studies!