

Anthropology programmes



www.uel.ac.uk



Anthropology Subject Area

BSc (Hons) Anthropology

UCAS Code: L602

3 years full-time, 5 years part-time

BSc (Hons) Anthropology with Native American Studies

UCAS Code L6Q4

4 years full-time

Certificate of Higher Education: Anthropology*

Evening programme providing entry onto BSc Anthropology

Anthropology can be studied as a major or minor subject, or as half of a joint degree

ANTHROPOLOGY: what's it all about?

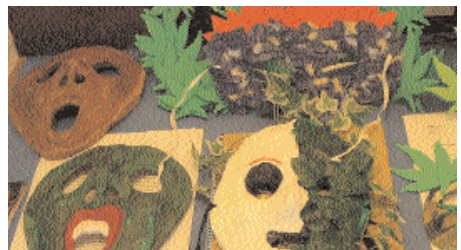
Anthropology, as we study it at UEL, is the study of humans – all their history and all their cultures. It cannot therefore be criticised for lack of ambition! It is the 'queen' of the sciences, as it attempts to integrate the life sciences' investigation of our physical origins and social anthropology's interpretation of the variety of human cultures. At UEL, we attempt to combine the various insights of biology (and animal behaviour), primatology, archaeology, palaeontology, social anthropology, myth and folklore studies. This American definition of anthropology, as an inter-disciplinary study of all human history and cultures, is as wide as all the world's peoples.

ANTHROPOLOGY: at UEL

The Anthropology degrees are designed to allow you to specialise in whatever areas interest you. This could be to follow an emphasis on biological anthropology, or in social anthropology, or in a combination of

the two. At UEL we ask the big questions that only Anthropology can answer – What is it to be human? How did language and culture evolve? Are families the same in the Amazon and in London's East End? Has there always been oppression of women, or racism or poverty? Who built Stonehenge and to what purpose? What happens when you put on a mask? What do fairy tales mean?

We will also introduce you to the main theories and methods in Anthropology. For example you will be expected to carry out some field work projects observing and interviewing people within their own 'subculture', and then writing some interpretative reports on your field-collected data.



There is also the opportunity to spend an extra year abroad at a North American University studying anthropology and specialising in the archaeology of the South West, Cognitive Anthropology and Bio-Social Anthropology.



Structure of the programme

Year One

In the first year of the Anthropology degree you will be expected to study a common core of four introductory modules: Social Anthropology; Anthropological debates on the origins of anatomically modern humans and the origins of culture; Kinship and marriage; and, modern anthropological theory through doing field projects.

You will also be expected to complete a module in Information Technology and study skills for anthropologists. The sixth module that completes the first year is an option module. Module choices include The Anthropology of Carnival; Archaeology; Third World Studies or Women's Studies.

Year Two

Students may choose more options alongside the compulsory modules. While you are expected to complete social anthropology modules in Theory, Political Anthropology and Cultures of Dominance and Cultures of Resistance, you may choose also to do

modules in Human Origins and the Ethnography of Aboriginal Australia, Refugees, Youth Cultures and Archaeology.

Year Three

Students must complete modules in Field Methods and a field-based social anthropology dissertation. It is up to you which other modules you choose from Cognitive and Linguistic Anthropology; Evolutionary Biology; Evolutionary Psychology; Human Sociobiology; Symbolic Anthropology; The Anthropology of Amazonia; and Decoding Stonehenge.

All Anthropology students are encouraged to attend the many field trips run by staff. There are trips to some of the South Sussex bonfire festivals, one-week field trips to South West Wales close to the source of Stonehenge bluestones, another to the town of Drogheda in the Irish Republic, and another to the Avebury Stone Circle at the summer solstice, trips to Darwin House and the Pitt-Rivers Museum in Oxford, and many 'carnival' events organised by the Samba Society started by Anthropology students.



Entry requirements

160 UCAS Tariff points including two A2 passes

12+ points at A/AS level

Merit (A) GNVQ

CCCC Scottish Highers

24 points (pass) International

Baccalaureate (Highers, all at level 4)

65% European Baccalaureate

1 Distinction, 6/4 Merits BTEC/SCOTEC

Diploma/Certificate

Relevant NVQ(3) and work experience

Relevant Access course

Other/overseas qualifications individually assessed

Admission to the second or third year is available to those with suitable qualifications.

There are no specific subject requirements for starting Anthropology.



Why study Anthropology

The traditional route for anthropology graduates who chose not to go into teaching and research was to become a museum curator. However, many more professional opportunities now exist for anthropology graduates trained to listen and interpret the meanings of other cultures. This is an important transferable skill valued by many organisations.

Anthropology graduates commonly choose to become social researchers, trainers/teachers, administrators/managers, evaluators, change agents, needs assessors, planners, policy researchers or research analysts.

To apply now

Complete an application form available from UCAS, Rosehill, NewBarn Lane, Cheltenham, Gloucestershire GL52 3LZ.

E-mail: app.req@ucas.ac.uk

If you need more information

Contact:

Lionel Sims

Anthropology Programme
School of Social Sciences, Media
and Cultural Studies
University of East London
4-6 University Way
London E16 2RD

Tel. 020 8223 2770

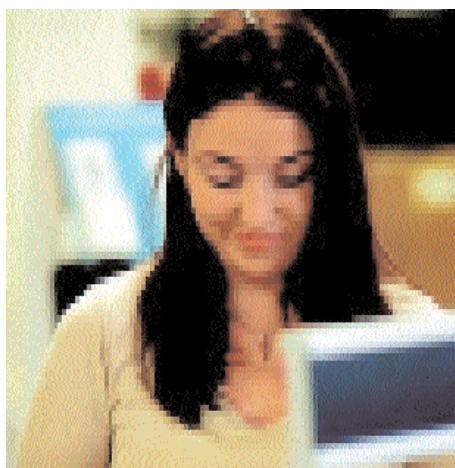
E-mail: l.d.sims@uel.ac.uk

or visit the School's web-site at

[www.uel.ac.uk/social-](http://www.uel.ac.uk/social-sciences/anthropology/index.htm)

[sciences/anthropology/index.htm](http://www.uel.ac.uk/social-sciences/anthropology/index.htm)

All applicants are encouraged to attend one of the open days run by the Anthropology staff throughout the Spring and Summer terms.



A joint or combined programme?

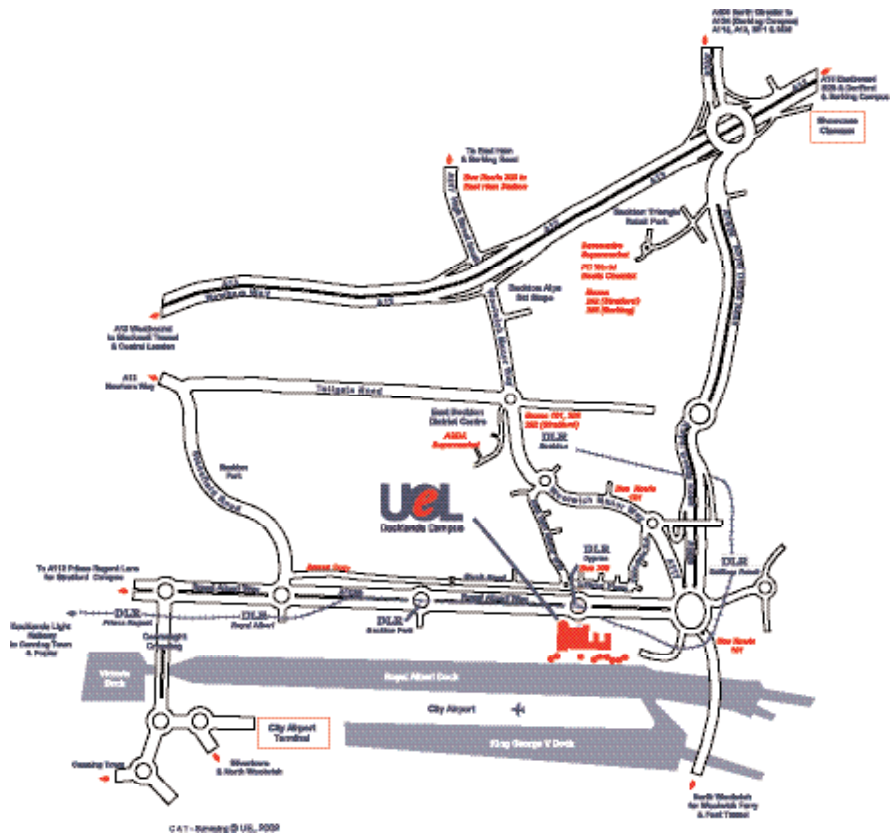
If you would like to study Anthropology as a major or minor element of an honours programme, contact us on 020 8223 2565/2518 for a copy of the Combined Honours leaflet and if you know which other subject you would like to study, a copy of that programme leaflet. You will find a complete list of available combinations of subjects both in the UEL Guide to Undergraduate Programmes (also available as a PDF file on our website), and in the UCAS handbook.

Where will I study?

This programme is offered at the Docklands Campus. There are halls of residence on campus at Docklands and Barking, and student flats and houses a ten minute bus-ride from Stratford. All three campuses have well-equipped libraries and learning resource facilities, and a choice of places to eat, and offer nursery facilities for the children of students and staff, and Students' Union bars. At Barking there are a swimming pool, two gymnasias, a squash court, and four tennis courts.

How do I get there?

The Docklands Light Railway's Cyprus station is immediately beside the UEL Docklands Campus, and frequent trains run from Bank, in the City, and Lewisham, south of the river, as well as Stratford and Canary Wharf, linking you to all parts of London and the rest of the UK. Buses 101, 262, and 300 stop next to the station, and road access is from the Gallions roundabout at the end of Royal Albert Way. London City Airport is just opposite the campus, ten minutes away by taxi.



In accordance with the Education Act 1994, students who enrol at UEL have the right not to be members of the Students' Union. Further information about membership is available on request. UEL operates a non-smoking policy.