

now and then



**NEW SPORTS AND ACADEMIC COMPLEX
TO OPEN IN DOCKLANDS CAMPUS IN 2012**



FROM THE EDITOR

Welcome to the summer 2010 edition of UEL's Alumni Network magazine, which I very much hope you will enjoy. This latest issue contains news stories, details of recent and forthcoming alumni events, interviews and profiles, a list of membership benefits, and details of the range of professional development courses and support available from UEL. A special welcome goes out to those of you who have finished your course within the last few weeks and are now receiving your first copy of *Now and Then*.

The last few months have been a busy and exciting period for the University, and this issue contains a wealth of information. I should like to draw your particular attention to news of our new Vice-Chancellor and partnership with Team USA on pages 4 and 5, the growing success of our Annual Fund on pages 16 to 20, as well as the calendar of forthcoming alumni events on page 21 and a list of membership benefits on page 25. Recent graduates may also be interested to hear about postgraduate course fee discount available exclusively to UEL alumni on page 27.

Your feedback and input is, as always, welcome, and you may contact the Development and Alumni Office on **+44 (0)20 8223 2222** or **alumni@uel.ac.uk**

Kind regards,

Guy Lawrenson, Alumni Development Officer



FROM THE HEAD OF DEVELOPMENT AND ALUMNI

The University of East London is a great place to study and stay in touch with. Our Docklands and Stratford Campuses are located in one of the most significant areas of London that is being transformed rapidly to host and deliver excellence by and beyond 2012. We have a range of exciting development plans and we look forward to maintaining and forging new successful partnerships in this exciting journey. One of the essential pillars of our future success and the biggest stakeholder group of UEL is our alumni. Alumni play many critical roles for the University, including mentoring and coaching, serving on advisory boards, providing financial support, and providing various resources in support of current students. My gratitude goes to our alumni who are already supporting their university in various ways, and I look forward to many more successful relationships and case stories in the years to come.

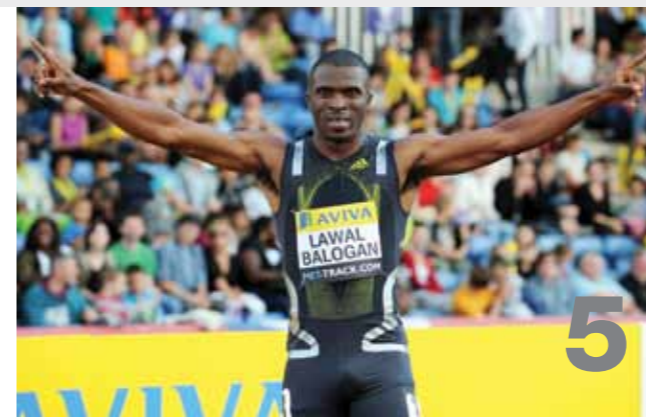
UEL's Alumni Network is the best way for our alumni to keep in touch and establish pathways of knowledge exchange with the vibrant and growing UEL community. There are many practical ways you could keep in touch and share your experience. You can:

- keep us informed about the changes in your contact details so that we can send you invites and publications
- use the alumni volunteering form on page 26 and let us know how you would like to contribute to the UEL community
- support our Annual Fund financially – see page 19 or use the donation form
- attend events and give feedback
- come back for discounted postgraduate study
- contact me to discuss and tailor-make the way you want to be involved.

I hope the information we provide for you in *Now and Then*, as well as at **www.uel.ac.uk/alumni**, will help you enjoy and strengthen your ties to the Alumni Network and the UEL community.

With my best wishes,

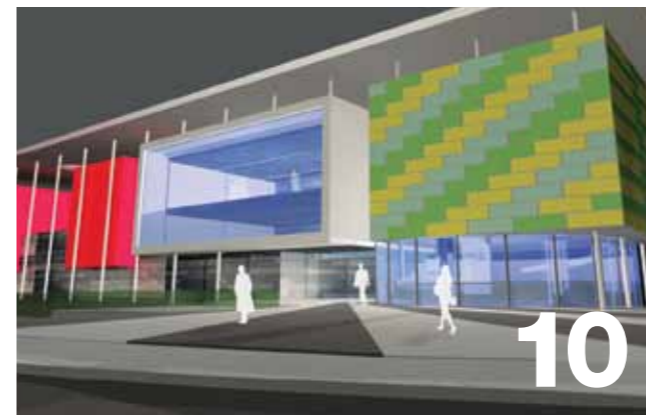
Dr Fariba Salehi



5



9



10



29



30

UEL Today

NEWS

- 04/ Our new Vice-Chancellor, Professor Patrick McGhee
- 05/ Team USA teams up with UEL for 2012 Olympic and Paralympic Games
- 06/ Honorary Award Holders' Annual Dinner
- 07/ New law clinic offers legal advice to local community
- 07/ UEL professor awarded £96,000 for health research project
- 08/ Pandora project reaches new heights of 3D technology
- 08/ Pioneering driver development course
- 09/ UEL student wins Spirit of London award
- 09/ Theatre Studies student in RSC play

Developing UEL Together

- 10–15/ New Sports and Academic Complex at Docklands
- 16–17/ 2009–10 telethon raise £85,000 for the Annual Fund
- 18–19/ Thank you to all our donors
- 20/ Forthcoming sponsored events

Alumni Network

- 21/ Calendar of forthcoming events
- 22–24/ Recent events
- 25/ Alumni network membership benefits
- 26/ Alumni volunteering form
- 27/ Discount on Postgraduate Studies
- 28–29/ Alumni interview – Superintendent Leroy Logan MBE
- 30/ Alumni profiles

Career Development and Entrepreneurship

- 31/ Knowledge Dock makes it happen for graduate entrepreneurs
- 32/ Graduate entrepreneur profile – Dr Tim Hunt
- 33/ News from UELconnect
- 33/ Free UELconnect short course: social media marketing for small businesses
- 34/ Boost your business with a graduate intern

Front cover picture: The north plaza and landscaping leading to the entrance to the main building. See pages 10–15.

Advertising in *Now and Then*: The University of East London is not responsible for the services provided by advertisers in this publication and readers are advised to make their own enquiries before engaging an advertiser's services.

OUR NEW VICE-CHANCELLOR, PROFESSOR PATRICK MCGHEE

We are delighted to let our Alumni know that UEL has appointed a new Vice-Chancellor, Professor Patrick McGhee, who took up his post at the beginning of February 2010 and was formally inaugurated on 23 April.

Born in Glasgow, Professor McGhee was the first member of his family to go to university. A graduate of the universities of Glasgow, Oxford and Harvard, he has joined UEL from the University of Central Lancashire, where he served first as Dean of Cultural, Legal and Social Studies, and later as Deputy Vice-Chancellor. His earlier posts included Associate Dean and Head of Psychology at the University of Bolton, and Head of Psychology at the University of Derby. He has also held academic positions at Sheffield Hallam University, Edge Hill University, and St George's Hospital Medical School, University of London.

Professor McGhee is a member of the Higher Education Funding Council for England's Teaching Quality and Student Experience Committee, as well as Chair of the North West Universities Association's Learning and Teaching Strategy Group. He is a Chartered Health Psychologist and has written extensively on psychology, learning and higher education, and in 2009 won a National Teaching Fellowship from the HE Academy. Widely travelled, he has also helped develop international partnerships in China, the United States, Russia and elsewhere.

"I am obviously very excited to be joining UEL at such an important time in its development. I am passionate about the potential of UEL to deliver outstanding opportunities to the learners, communities and businesses of the region. UEL's distinctive strengths in its location, diversity, distance learning and Olympic and Paralympic engagement give it a unique role in the regeneration of the area. I look forward to working with my new colleagues, our alumni and our students as we seek to enhance UEL's reputation still further, both nationally and internationally, and in particular give our students a first class experience", said Professor McGhee upon news of his appointment.



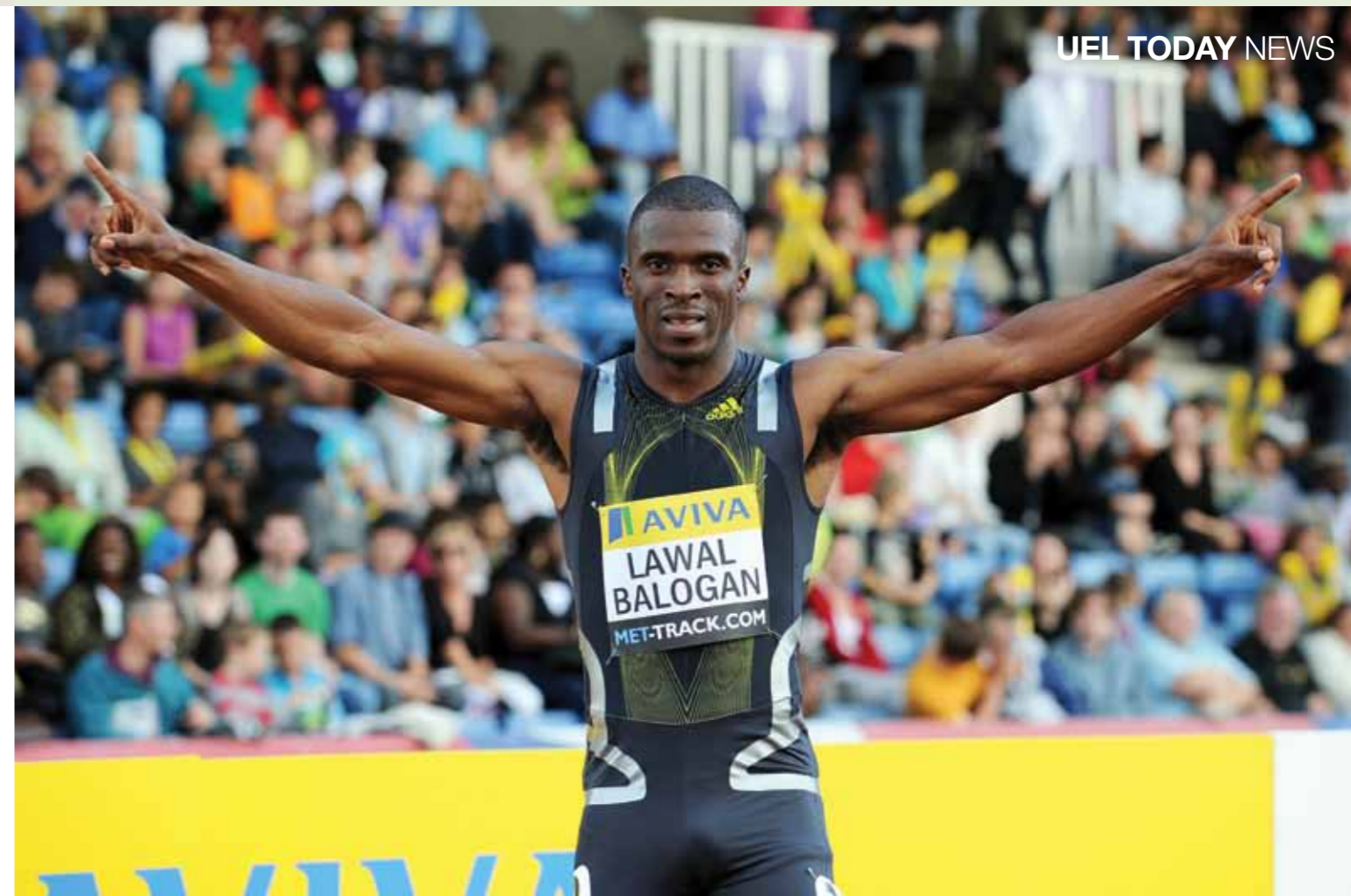
▲ Professor Patrick McGhee, Vice-Chancellor

"My vision of a university is one which includes both research and teaching, and which covers a broad spectrum of disciplines. I further believe that, while education rightly serves to boost employability and enterprise, and applied research can demonstrate benefits for industry and business, learning and research are worth doing for their own sake. It is part of human nature to learn and explore, and universities have a historically unique role in promoting that kind of intellectual endeavour", he added.

Professor McGhee also sees the 2012 Olympic and Paralympic Games as

a fantastic opportunity for UEL and East London. "The Games are a hugely exciting development and one which will help raise the University's profile even further. However, I am particularly keen to ensure that there is a real legacy for the people of East London.

As a university we will work in close partnership with our alumni and other key players to ensure that the communities who host the 2012 Games will, in time, by virtue of that legacy, be able to secure the same social and economic chances as their neighbours across London", he said. ■



TEAM USA TEAMS UP WITH UEL FOR 2012 OLYMPIC AND PARALYMPIC GAMES

In March 2010 it was announced that the United States Olympic Committee (USOC) will use UEL's campuses as its base for athlete performance services and logistical operations during the 2012 Olympic and Paralympic Games.

Team USA will use our Docklands and Stratford campuses for training and support for its Olympic and Paralympic teams – more than 1,000 athletes, coaches, scientists, medical practitioners and support staff will use our state-of-the-art facilities.

"UEL is delighted to host some of the world's greatest athletes. We are serious about sport and...the partnership is also an opportunity to build the legacy that will continue beyond 2012 and into the future to boost participation in sport", said Professor Patrick McGhee, our Vice-Chancellor, as he welcomed news of the agreement.

"This is a great opportunity for our athletes and staff to use these excellent facilities. We are looking forward to the

next few years of this relationship with such an outstanding university", said Scott Blackmun, USOC Chief Executive Officer.

Team USA will be using facilities such as the halls of residence, as well as setting up onsite sports science, medical and media centres as part of their sport performance and operational base. They will also use the remarkable new £20m sports and academic centre which is on course to be completed in 2012 at our Docklands Campus. The centre will feature a gym and fitness suite, large indoor sports arena, ten badminton courts, two competition basketball courts, volleyball and netball courts, cricket bays, two five-a-side football pitches and a sports café.

Nirmal Borkhataria and Paul Ford, UEL's Directors of Finance and Olympic & Paralympic Partnership Operations respectively, flew to Colorado to sign the official Memorandum of Understanding to secure the partnership.

"It is a privilege that USOC have

selected us for their 2012 training site, and this can be attributed to the hard work that many UEL staff members have put in since the 2008 Beijing Games", said Paul at the signing ceremony.

"We are delighted to take this fantastic step forward, which further shows how committed we are towards the 2012 Games. We are proud of our state of the art facilities at both campuses, as they highlight the recent investments we have made. The agreement goes to prove just how exceptional they are", added David Cosford, UEL's Director of Sport. ■

For further information, please visit www.uel.ac.uk/sports.

Details of the Sports and Academic Complex being built at our Docklands campus may be found on **pages 10-15**.

▲ Jeffrey Lawal Balogun, UEL student and British 200m runner, who hopes to compete at the 2012 Games.

HONORARY AWARD HOLDERS' ANNUAL DINNER

On Thursday 28 January 2010 Lord Rix, UEL's Chancellor, hosted more than 100 honorary award holders, university officials and their guests at our annual dinner for honorary graduates at the House of Lords. The event allowed those in attendance to enjoy not only a wonderful social occasion, but also an excellent opportunity to learn about what has been going on at UEL over the past twelve months. Among those in attendance were five 2009 honorary award recipients: Sathi Ludhianvi, Liam Kane, Sir Michael Wilshaw, Elpha LeCointe and Judge Howard Levenson.

Lord Rix welcomed guests and took great pleasure in introducing our new Vice-Chancellor, Professor Patrick McGhee, who in turn spoke passionately on his vision for UEL's future. Mark Stephens, Chair of UEL's Board of Governors, then spoke in greater detail about our recent achievements and exciting development plans, including a new library at Stratford and a sports and academic complex at Docklands. Departing guests were presented with a copy of our honorary award holders' magazine and information pack, containing details of our exciting development plans. ■

▼ Guests at the 2010 Honorary Awards Holders' dinner

Our 2010 Honorary Award Holders

HONORARY DOCTOR OF ARTS

Sathi Ludhianvi, writer, broadcaster and journalist

Christine Ohurugu, MBE, Olympic and World champion 400m runner

Sunand Prasad, President of the Royal Institute of British Architects

HONORARY DOCTOR OF EDUCATION

Ralph Tabberer, CB, Chief Schools Officer at GEMS Education, Dubai

Sir Michael Wilshaw, Principal of Mossbourne Community Academy

HONORARY DOCTOR OF LETTERS

Kwame Kwei-Armah, actor, playwright and broadcaster

HONORARY MASTER OF ARTS

June Brown, MBE, actress best known for her role as Dot Cotton in the BBC's *Eastenders*

Onyinye Oyedele, journalist and author

HONORARY DOCTOR OF BUSINESS ADMINISTRATION

James Caan, entrepreneur, philanthropist and star of the BBC's *Dragons' Den*

Liam Kane, chief executive of East London Business Alliance

Baroness Kingsmill, CBE, businesswoman and member of the House of Lords Economic Affairs Committee

Sir Gulam Noon, MBE, businessman and chairman of Noon Products, makers of Indian cuisine

HONORARY DOCTOR OF LAW

Elpha LeCointe, UEL graduate, barrister and minority rights campaigner

Judge Howard Levenson, Upper Tribunal judge and former lecturer at UEL's School of Law

Benita Refson, Chief Executive of The Place2Be, a school-based counselling service dedicated to improving the emotional wellbeing of children and their families

HONORARY DOCTOR OF SCIENCE

Lord Coe, KBE, Double Olympic 1,500m gold medallist and chairman of the London Organising Committee of the Olympic Games

HONORARY MASTER OF SCIENCE

Mark Hunter, MBE, Olympic and World rowing champion

NEW LAW CLINIC OFFERS LEGAL ADVICE TO LOCAL COMMUNITY

Staff and students of our School of Law have launched UEL's pro bono Law Clinic, which offers free legal advice to the local community and valuable legal experience to our law students.

Based at the School of Law's Duncan House campus in Stratford, the Law Clinic is staffed by trained student volunteers who are supervised by qualified and experienced legal practitioners. All of the Clinic's services are free of charge, with priority going to those individuals who do not qualify for legal aid, or who cannot afford a solicitor. The Law Clinic is able to provide advice on landlord and tenant, employment, consumer, contractual, and social security matters. Available services include written legal advice, letter drafting and representation in dealings with other parties, as well as advice and assistance on the correct procedures and forms to complete when representing oneself in a civil matter.

"Everyone knows that Stratford is undergoing rapid regeneration. Yet despite these exciting changes some residents

may still find it difficult to access free legal advice, and the School of Law is seeking to provide an opportunity for them to do so as part of its continued commitment to the community", said Justin Pierce, Lecturer at the School of Law. ■

The Law Clinic welcomes enquiries from members of the Alumni Network who are practicing solicitors or barristers

interested in becoming involved with the centre's activities. More information about the Law Clinic may be found on its website – www.uel.ac.uk/lawclinic. Alternatively, contact the Clinic on +44 (0)20 8223 4048 or lawcentre@uel.ac.uk

▼ Our Law Clinic located at our Duncan House campus in Stratford



UEL PROFESSOR AWARDED £96,000 FOR HEALTH RESEARCH PROJECT

Professor Angela Harden, who is Professor of Community and Family Health at UEL's Institute of Health and Human Development, based in our School of Health and Bioscience, has been awarded a grant of £96,000 by the Department of Health's National Institute of Health Research to lead a team of health, education and social science experts in an investigation of the inequalities surrounding access to antenatal care in the London borough of Newham.

Professor Harden, whose post is jointly funded by Newham University Hospital NHS Trust, will carry out a one-year pilot study to examine how antenatal services for Newham's women and their families may be improved. The project will involve experts from UEL, Newham University Hospital NHS Trust and the University of London's Institute of Education.

The study, which will begin in June

"We are looking to help women access antenatal care as early as possible in their pregnancy, ideally before ten weeks. Previous research and data suggests accessing these services is not always straightforward or easy, particularly for the most vulnerable and disadvantaged women who may have complex medical and social needs." Professor Harden

of this year, will explore the social factors that affect access to antenatal care, and Professor Harden's team will conduct interviews and focus groups in the local community in order to collect the views of women who are receiving, or have recently received, antenatal care. Hospital records will be analysed and the views of health professionals sought, with international research in the field also been used to form conclusions. The team's report will

highlight the good work already being done by Newham's health services and suggest ways in which services could be improved upon. It is hoped the study will lead to further funding for a five-year research programme addressing the issues identified. ■

For more information visit www.uel.ac.uk/ihhd



PANDORA PROJECT REACHES NEW HEIGHT OF 3D TECHNOLOGY

A two-year, €3.9 million research project focusing on the development of innovative new 3D training environments for professionals who deal with national emergencies is underway at UEL.

The Pandora programme was begun in January and is being led by Professor Mohammad Dastbaz, Dean of the School of Computing, IT and Engineering (CITE). The project is funded by the European Union and aims to help decision makers bridge the gap between table-top and field training approaches to disaster management, thereby helping to prevent a national emergency turning into a national crisis. Pandora proposes a global approach to real-time crisis management, and Professor Dastbaz's team is working with national and European partners, including the Cabinet Office's Emergency Planning College, the University of Greenwich and the Italian Institute of Cognitive Sciences and Technologies.

The project will create a 3D virtual control room in which various training programmes based on different scenarios will take place. The training controller will monitor trainees' behaviour and decision-taking processes, and provide



feedback on the impact of their choices. The system will also have an 'emotion' engine that will monitor the pressure that a decision maker goes through, passing the information back to the controller for assessment.

"UEL is excited about being involved in this innovative project. Pandora provides

the trainee with a near-real training environment at an affordable cost. We hope in the future this will save valuable time in a crisis and ultimately save lives", said Professor Dastbaz, who is the project's Principal Investigator. ■

▲ Professor Mohammad Dastbaz

PIONEERING DRIVER DEVELOPMENT COURSE

UEL's School of Psychology is leading the way in coaching skills for the driving industry with an innovative course designed to look at new ways of improving driver standards and training. The five-day programme for professional drivers is called Coaching for Driver Development and aims to teach psychological theory with the practical application of 'in-car coaching'.

The driving industry is always looking at ways to improve road safety, especially for groups such as 17 to 25-year-olds, who are the most at-risk group on the roads. UEL has been working with the Driving Standards Agency and the Royal Society for the Prevention of Accidents to examine the benefits of driver coaching, and has been conducting research into this area, with the first study due for

“UEL is trying to help those in the driving development industry make the shift from old, traditional methods to using what we know from research to improve the overall learning experience for learner drivers. This includes using techniques such as coaching, which can help learners not only understand what to do, but why they are doing it.”

Dr Jonathan Passmore School of Psychology

publication later this year.

UEL's Dr Jonathan Passmore is one of the UK's leading coaching psychologists and he has been working with the Executive Chairman of Performance Consultants, Sir John Whitmore, to bring coaching skills to driving. Jonathan's research with heavy goods vehicles drivers has shown that coaching can make a

significant difference to both the speed with which learners progress and the first-time pass rate.

According to one participant, learner drivers "are likely to take more responsibility for their driving actions when they learn to self evaluate, and this course gave us coaching techniques that we could apply daily". ■

OUR STUDENT WINS SPIRIT OF LONDON AWARD

In November of last year Mariama Samba (BA (Hons) Media and Creative Industries) won 'Best Achievement Through Music' at the inaugural Spirit of London Awards, which celebrate young Londoners who make the most of their communities.

Each category was judged by a panel of celebrities, which included singer Leona Lewis, athlete Christine Ohuruogu, DJ Richard Blackwood and hip-hop artist Ms Dynamite. All of the nominees were invited to a reception at 10 Downing Street, hosted by Prime Minister Gordon Brown and his wife Sarah, and the awards ceremony itself took place at London's Alexandra Palace.

Mariama, who was nominated for the award by a friend, last year performed

as an opening act for Senegalese musician Youssou N'dour at London's O2. Her music comes from a foundation of R'n'B and uses first-hand experience of negativity for the better. "It's been a fantastic year so far and I've been really privileged. I started writing poetry when I was fifteen and it was in response to racial tension in my school. I wanted to express that injustice and later on, those poems became my music. It's an achievement to be at UEL too and I'm here to meet all my personal goals", said Mariama. ■

For more information on the Spirit of London Award: www.spiritoflondonawards.com

Mariama Samba ▶



◀ Michael Amaning

THEATRE STUDIES STUDENT IN RSC PLAY

Earlier this year Michael Amaning (BA Hons Theatre Studies) landed a key role in the Royal Shakespeare Company's *Dunsinane*, which premiered at Hampstead Theatre in February. The play was written by acclaimed Scottish playwright and theatre director David Greig, and tells the story of an English army taking over in Scotland after the death of Macbeth. Michael played the parts of a soldier and a Scottish laird.

"I auditioned for the role after my friend introduced me to the assistant director. It's really exciting and challenging juggling acting with my course work...I've had rehearsals every Saturday since January and then it was every day. My family have come to see me and they are really proud", said Michael.

Before choosing to study at UEL Michael was working at the National Youth Theatre. He is currently working hard on

his studies, but hopes to set up a theatre company and get involved with writing and directing once he has graduated.

"I've always been interested in acting as I like to explain my stories through my plays and influence people on a positive level to think about the issues that matter; to open their hearts and minds further", he said. ■

ONE OF OUR MAIN DEVELOPMENT PLANS 2010–2012:

SPORTS AND ACADEMIC COMPLEX



Aerial view of Docklands, featuring the UEL campus, London City Airport, the ExCel Exhibition Centre and the O2 Arena



The O2
The world's most popular music venue

ExCel Centre

London City Airport

University of East London

Cyprus DLR

UEL Sports and Academic Complex

Gallions Reach DLR

LOCATION

Land at Docklands Campus known as The Teardrop

AREA

5,500m²

TIMESCALE TO COMPLETE

2010–2012

TOTAL COST

£20 million

UEL CONTRIBUTION

£18 million

AMOUNT TO RAISE

£2 million

NEW SPORTS AND ACADEMIC COMPLEX AT DOCKLANDS CAMPUS

This project is to be completed by 2012, ready six months before the Games for Team USA to use it as their training base.



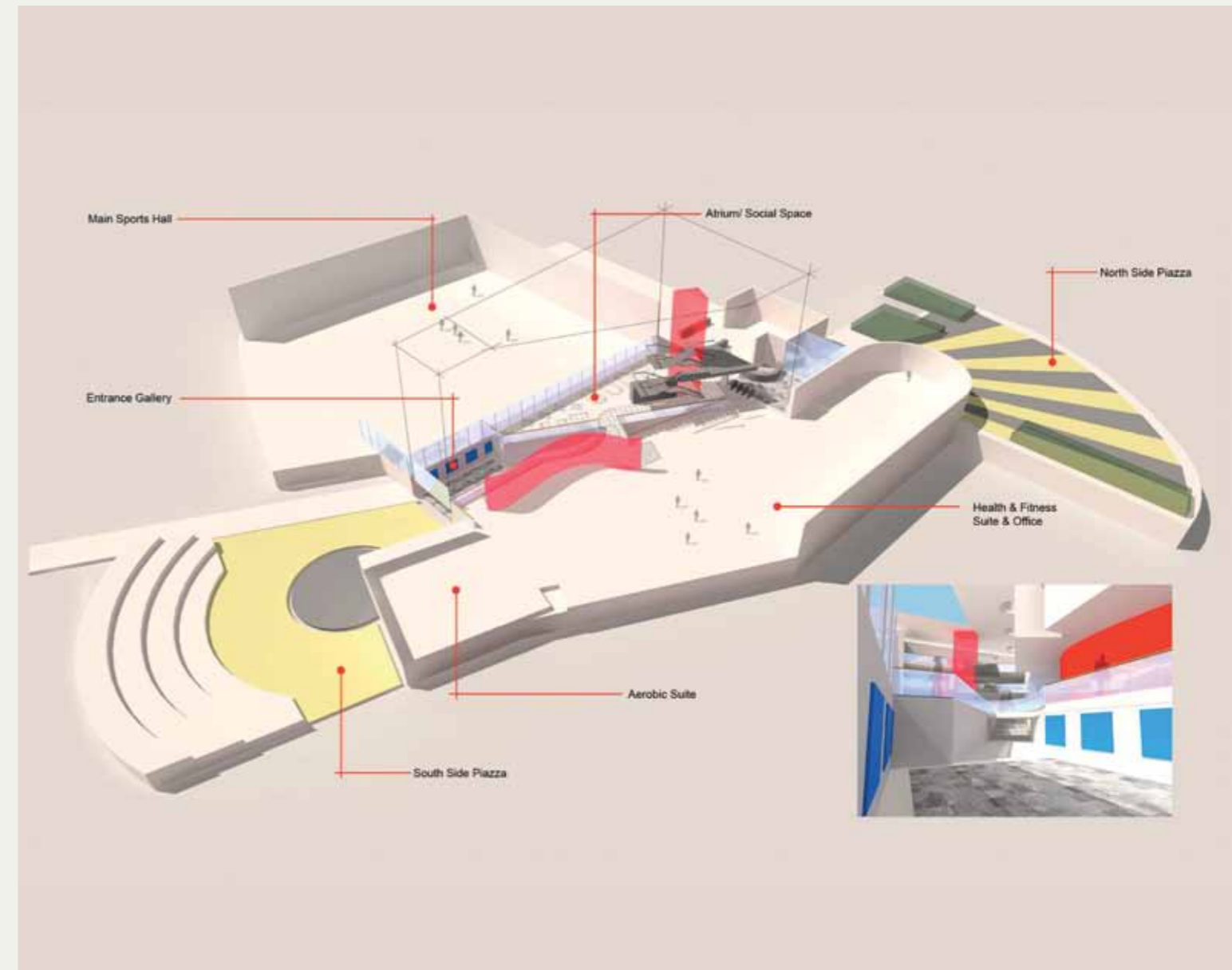
This major capital development will be built on 5,500m² of land at Docklands Campus, and will provide a variety of indoor and outdoor sports and social facilities for our students, staff and local communities.

The project is planned to start in 2010 and be completed in 2012. It will comprise a sports complex, communal facilities and an educational suite including:

- a sports hall (40m x 37m), including multiple courts for basketball, volleyball, netball, five-a-side football and cricket
- a health and fitness suite (600m²), with approximately 100 pieces of fitness equipment
- a dance and aerobics studio (200m²), multi-purpose room for classes, martial arts and table tennis

- an educational suite including laboratories for fitness testing, sports coaching, training, research and consultancy
- a multi-use dance suite (200m²)
- two multi-use games areas (45m x 35m)
- a sports café, relaxation and social area
- indoor changing rooms, showers and toilets
- a landscape scheme including a car park with road access, 120 dedicated parking spaces and access to a further 250 spaces during evenings and weekend periods, plus cycle racks and disability access.

▲ Architectural mapping of the entrance gallery of the main building



▲ Architectural mapping of the Sports and Academic Complex

ACADEMIC SUPPORT

The centre will support our academic development, including new courses in sport, coaching and management, strength and conditioning science, and sports psychology, as well as providing additional space for teaching and practising dance, drama and music.

What our students have to say

“ We do need to expand our facilities and resources and the backing we receive from our supporters is very encouraging.

The younger members of my family will be coming to UEL, so it is so easy for me to feel passionate about this project. ”

Maria De La Cruz

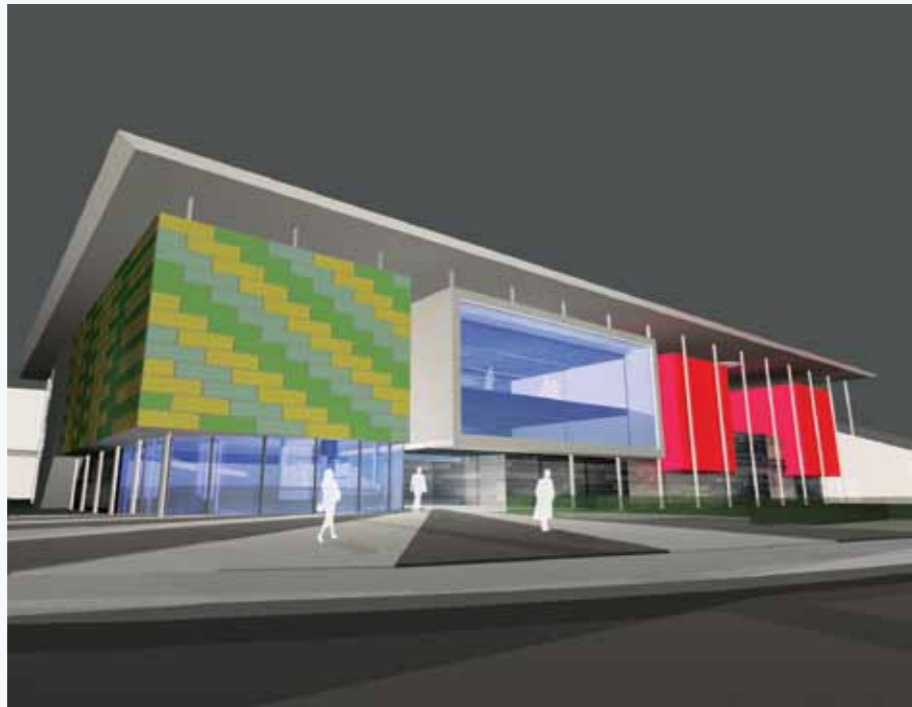
Third-year student in psychology



IMPACT AND OPPORTUNITIES

The project will:

- ensure a post-2012 legacy for our students and communities
- enable and promote healthier lifestyles for our students and communities
- engage with professional and amateur sports teams and activities, building long-term and sustainable partnerships with other organisations
- assist academic development, with new courses including Sports Coaching and Management, Strength and Conditioning Science, and Sports Psychology, and additional spaces for teaching and practicing dance, drama and music
- help to maintain viable, accessible public transport services within the area
- ensure institutional sustainability through construction and operation methods
- complete the UEL Docklands Campus masterplan with flexibility for future growth
- provide opportunities to support high-level sports performance: the project will attract, recruit and support sportsmen and women performing at a high level of competition. The project will enable the identification of local talent and ensure this talent is nurtured and supported optimally.



▲ Artist's impression of the main building as seen from Gallions Reach roundabout

What our students have to say

“ The Annual Fund is a fantastic way to support the University, because the money raised goes towards what students really need. UEL has a lack of sports facilities, which is a matter that seriously needs to be addressed.

With the growing rate of obesity in the UK, UEL needs to show it is doing its bit to keep its students and communities fit and healthy. ”

Shalini Dharmaseelan
Second-year student in Psychology



▲ The north plaza and landscaping leading to the entrance to the main building

◆ Conceptual model of the main building using distinctive materials

PLEASE DONATE TO OUR SPORTS AND ACADEMIC COMPLEX BY:

- filling in the attached donation form and sending it to us in the envelope provided
- donating securely online: www.uel.ac.uk/development/donate

2009–10 TELETHONS RAISE £85,000 FOR THE ANNUAL FUND

UEL's 2009-10 telemarketing campaign is now complete, with our student callers having raised more than £85,000 in donations and pledges from our alumni in support of the Annual Fund. This amount will be topped up by a further 50%, to a potential £127,500, by the Government's Matched Funding Scheme. The campaign has significant non-financial gains which are equally, if not more, important than the

financial results. These include enhancing student and alumni experiences by:

- engaging them in the University's fundraising campaigns and its future development plans
- providing work experience and an opportunity for team work and team building for students
- offering paid employment in a professional environment
- reaching out to thousands of our alumni and re-establishing contact on a one-to-one basis
- putting students and alumni in touch, and creating an invaluable 'knowledge transfer' pathway
- creating a culture of giving and a support base for the university. ■



“The telethon is a fantastic tool which allows us to engage with the University's alumni on a one-to-one basis. It gives us a chance to let our alumni know what the university has been up to since they left and give them an update on our future development plans. It also provides a good opportunity for our graduates to be involved with the future development plans of the University and lend their support to the Annual Fund projects. Our student callers, on the other hand, will gain invaluable advice from our alumni and gain work experience. As the Annual Fund Officer at the University of East London, I am very proud of both UEL's team of hard-working student callers and its generous alumni. It is great to know that so many people are onboard with the University's future development plans and become a **Friend of UEL**. As expected, our alumni have proved to be a passionate and generous source of support for their University, and we look forward to strengthening the relationship between our students, staff and alumni in the years to come. ”

Charlie Tyce Annual Fund Officer

QUOTES FROM OF SOME OF OUR **TOP STUDENT CALLERS** ABOUT OUR 2009–2010 TELETHON



“The fundraising campaign is one of the most exciting jobs that I have ever done in all my life, because the nature of the job is extremely appealing to me: it provides direct contact with the graduates of this University and it gives me a chance to discuss the future plans of the University with them.

I am very honoured to be part of the future of UEL and I would not have second thoughts to do it again. ”

Raqs Ahasan First-year student in Accounting and Finance – Royal Docks Business School

“ Since I started working as a student caller for the fundraising campaign of the Development and Alumni Office, I have learnt a lot about the issues that universities face regarding funding and new development plans. So when I graduate, I will be more empathic and certainly consider supporting UEL. ”



Gagan Jay Third-year student in International Tourism – Royal Docks Business School



“ I think this campaign provides a great experience for students and alumni to be more involved with their University. UEL has a great cause for fundraising, and to get our alumni understand our development projects and support the university is a great way to expand UEL's support network. Students get a chance to speak to our alumni, while working in a professional capacity and learning new skills. It has been a fantastic opportunity for me to be involved with this campaign and I have found it very fulfilling and rewarding. ”

Becky Armstrong Third-year student in Special Needs and Inclusive Education – Cass School of Education

“ I have found the campaign really rewarding. It is a good chance to give back to the University that has given me the opportunity to learn and study. I have really enjoyed it.

The experience is very beneficial for raising awareness for the University's development plans, while it is also lovely to talk to our alumni. This experience has given me a good insight of how to think about life after graduation and how to keep in touch with my University. ”



Corinne Linton Third-year student in Psychosocial Studies – School of Humanities and Social Sciences



“ It is so important to help the future generation of students by supporting the development plans of the University through its fundraising campaigns.

The campaign produces first-hand experiences of life after graduation when we speak with our alumni. The job is great and the atmosphere is very relaxed and friendly. I feel very happy to be part of this campaign and I have made several very good friends. ”

Auzzam Chaudhri First-year student in Computer Networks – School of Computing, IT and Engineering

THANK YOU TO ALL OUR DONORS

The following donors have supported our Annual Fund since September 2009, meaning that the university has received support from almost 300 new 'Friends of UEL' in less than six months.

Thank you all for your invaluable support.

Our donors are all invited to our Annual Fund Awards Ceremony, which will be hosted by the Vice-Chancellor in September 2010. Details will be announced at a later date. The Ceremony will provide a public platform for our donors to be acknowledged and thanked, and our beneficiaries to receive the first Student Hardship Grants and Research Start-up Grants.

Aaron Nwabude
Abdul Quiyum
Abinash Soora
Abu Ahmed
Adam Waller
Adnanul Jaigirdar
Afsar Asad
Aftab Amin
Agesh Shobana
Alan Golden
Alison Farmer
Andrew Fadipe
Andrew Palmer
Andrew Preston
Andrew Shum
Angela Beckles
Ann Haycock
Ann Waterman
Anne Watkinson
Annette Quinn
Anthony Okeke
Athanasis Stylianou
Ava Cooke
Ayesha Bedwei
Ayokunle Ajayi
Babatunde Adesilu
Begonia Ng
Ben Gemmell
Benedict Otoo
Benedicta Offen
Bernard Jumbo
Beverly Tarplett
Bright Ngabu
Capt Franklin Agbotui
Caroline Brown
Catherine Armstrong
Catherine Downes

Catherine Wass
Chantelle Hydes
Charalampos Ververis
Charlotte Till
Charlotte Tyce
Chimene Nwagbara
Chris Gaskell
Chris Jesty
Chris Johnson
Christine Obeng
Christine O'Sullivan
Claire Rugman
Claudette Uzoeshi
Clyde Baker
Col Mike and Jan Dudding
Colin Carmichael
Daniel Carpenter
Danton Irakiza
Daphne Hosie
David Cook
Deb Datta
Deborah Perryman
Denis Farmery
Denis Farmery
Detlef Stoebe
Diana Daniel
Diane Lester
Doris Sheril
Dr Bethanne Willingham
Dr Charalambos Ververis
Dr Gali Gold
Dr Gordon Fey
Dr Michael Sonny
Dr Patricia Berko
Dr Peter Blower
Dr Roberta Babb
Dr Terry Parlett

Efunsola Somoye
Efunsola Somoye
Eghosa Ogbeide
Elizabeth Butler
Elizabeth Wingrove
Elseta Elsheikh
Emma Foster
Emma Phillips
Erivestine Dalgety
Ernest Humphries
Errol Strachan
Esther Grillon
Evelyn Agyeman
Fahmi Jama
Farhat Nouman
Farzana Kobir
Fatoumata Koulibali
Felicia Ekwebelem
Flauriner Dickson
Folusho Fagbemi
Frank Baker
Frank Oti
Gabby Fidelis-Iwelu
Gareth Gabriel
Gary Dalton
Gary Nash
Gbolahan Esuruoso
Gemma Harding
Gifty Annan
Gilbert Sim
Graham Clarke
Grazyna Maczkowska
Gregory Bolland
Hafiz Sharif
Hannah Wilson
Hayley Bent
Helen Aigbogun

Helena Holt
Hilary Laundon
Honor Blackman
Ian Appleton
Ian Hepworth
Imran Younis
Jagir Alam
James Beckles
Jana Tomori-shodiya
Jane Heard
Jane Schrapel
Jane Spray
Janet Preston
Jason Kutosi-Kulongo
Jason Phillips
Jimi Bolusire
Joanna Corns
Joel Tahoulan
John Fitt
John Jewell Esq
John Roach
Joy Mccalman
Juhel Alom
Julie Setchfield
Julie Wilson
Kaleada Khanum
Karin Foster
Katherine Phillips
Kerry Murphy
Kevin Bailey
Khaled Hussein
Kikumbi Kodi
Kim Bond
Kwaku Amponsah-abedi
Kwasi Osei-Kuffuor
Lavina Brown
Lennox Drayton

Lillian Amongi
Lisa Rowles
Lise Egenes
Lyn Packer
Lynne Chadwick
Malcolm Taylor
Malenia James
Malik Chowdhury
Margherita Maria Rosina
Robinson
Maria McNally
Marie Anne Chattaway
Mark Eves
Mark Hooper
Mark Kirwin
Mark Terrell
Martin Durina
Martin Kearney
Marvin Anderson
Mary Fincham
Matthew Waterfall
Maxine Ellis
Maynora Petra Jones
Melanie Bullock
Merisha Wright
Michele Navinder Kaur
Michelle Larche
Michelle Nathan-keene
Mohammad Ali
Mohammed Bah
Mohammed Haque
Mohammed Rahman
Mojisola Oladeji

Mona Reynolds
Morag Bocarro
Morayo Amao
Naresna Shah
Narsimlu Gajji
Nasreen Somauroo
Neil Watson
Nelda Johnson
Nicholas Chrispin
Nicola Moutt
Nicola Scavolo
Nurein Abubakar
Oluremilekun Famurewa
Olurotimi Ogunbayo
Opeyemi Adelusola
Ourania Begka
Paolo Valenziano
Patrice Buddington
Patrick Muyot
Paulette Ogun
Paulina Reyes
Pauline Dron
Pericles Vassilopoulos
Peter Macarthy
Peter Schulz
Peter Spooner
Praveen Dandasi
Professor Doonan
Rahman Chowdhury
Rais Ahmed
Ranjit Najran
Rebecca Armstrong
Rena Basten

Richard Aubrey
Richard Croucher
Richard Forster
Richard Wampah
Rita Sharma
Rob Hammond
Robert Larkin-Frost
Robin Mann
Ronnie Bourkadi
Ross Levere
Ryan Williams
Saghir Ahmad
Salahuddin Milki
Sally El-kashef
Sally Strong
Sandeep Dhaliwal
Sarah Askew
Sarah Scott
Sathi Ludhianvi
Shahnaz Rizwan
Sham Rashid
Shamaela Perwiz
Shamsul Hoque
Sharifa Patel
Shelley Deutsch
Shirley Lickfold
Simon Field
Sinja Falk
Sohail Shuja
Stanley Balzer
Stella Bamgboye
Stella Malcolm
Stephen Cockerton

Stephen Davis
Stephen Whaymand
Subrena Joseph
Sufian Miah
Susan Ford
Susan Page
Tabitha Abiola
Ted Parker
Thamimnisha Saidullah
The Trust of Laurie and Gillian
Marsh (on behalf of Laurie
Marsh)
Thomas Ranger
Tracey Barber
Tracey Mcclean
Tracy Barber
Trevor Weeks
Victoria Colbourne
Victoria Malone
Victoria Wilkey
Vida Anokye
Virginia Guellal
William Golden
Yanzapa Londo
Yasmin Allen
Yavonne Williams
Zaid Hanif
Joseph Oluabey
Alwarsamy Rengamannar
Jean Knight

List correct at time of compilation (15 March 2010)

We would also like to thank all of our regular donors from previous campaigns who continue to support the University on a regular basis. If you are still considering supporting us please go to www.uel.ac.uk/development/donate/index.htm to donate online.

BE A FRIEND OF UEL
Please support our Annual Fund

- A donation form is enclosed for you to fill in and send back
- Go online and donate on www.uel.ac.uk/development/donate

Thank you!

JOIN **TEAM UEL** AND **HELP RAISE FUNDS** FOR THE SPORTS AND ACADEMIC COMPLEX

UEL's Director of Sport and the Development and Alumni Office will be holding a series of sponsored events in May, June, July and August 2010. Why don't you get involved?

Have some fun and raise some money for the Sports and Academic Complex on the Docklands Campus, which is due for completion in 2012, in time for Team USA to use it as their base for the 2012 Olympics.

We are all very excited about these events and hope that you will want to take part and do your bit for UEL, be it through a daredevil bungee jump or a half marathon through the streets of East London. Your entry fee for the event will be paid for by the University, and each competitor will receive a 'Friend of UEL' t-shirt. All we ask in return is that you raise the minimum sponsorship amount. There will be a prize draw for those who

raise more. We have limited spaces up for grabs in each event so don't delay – contact us now for more information. ■

Training will be offered for the events, as will support with your fundraising efforts. If you would like an entry form or more information on any of the sponsored events please contact Charlie Tyce on c.tyce@uel.ac.uk or **+44 (0)20 8223 6443**. Call NOW!

Event	Date	Location	No of Spaces	Minimum Target Sponsorship per person
Bungee Jump	9 June 2010	Docklands Campus	40	£500
British Gas Great London Swim	3 July 2010	Royal Victoria Dock, East London	40	£350
Mazda Triathlon	7–8 August 2010	ExCeL – East London	10 Teams	£350 per participant
Run to the Beat	26 September 2010	O2, Greenwich	40	£350



CALENDAR OF **FORTHCOMING EVENTS**

Date	Location	Event
Thursday 10 June 6pm – 9pm	Stratford Campus	THE PSYCHOLOGY OF SUCCESS Guest speaker Judith Leary-Joyce will deliver a presentation on 'The Psychology of Success'. There will also be an opportunity to participate in workshops after the lecture, meet prospective employers, get advice from UEL's Employability Unit, and socialise with other alumni, students and staff.
Thursday 17 June 6pm – 9pm	Cass School of Education, Stratford Campus	CASS SCHOOL OF EDUCATION ALUMNI BARBEQUE The Dean of UEL's Cass School of Education, Ann Slater, will host a reunion for all graduates of the School.
September	Stratford	TOUR OF THE OLYMPIC PARK Followed by a reception at our Stratford Campus.
Thursday 7 October 6 – 9pm	Docklands	SCHOOL OF HUMANITIES AND SOCIAL SCIENCES Details will be published nearer to the time.
Thursday 21 October 6pm – 9pm	London	CREATIVE ARTS INDUSTRIES SERIES EVENT Details will be published nearer to the time.
Thursday 28 October 2pm	Barbican Centre, London	GRADUATION CEREMONY – CASS SCHOOL OF EDUCATION See www.uel.ac.uk/graduation for more information
Thursday 4 November 7pm	Stratford Campus	OCCUPATIONAL AND ORGANISATIONAL PSYCHOLOGY REUNION Open to all graduates of UEL's occupational and organisational psychology courses.
Monday 8 November 11am	Barbican Centre, London	GRADUATION CEREMONY – ROYAL DOCKS BUSINESS SCHOOL See www.uel.ac.uk/graduation for more information
Tuesday 16 November 11am	Barbican Centre, London	GRADUATION CEREMONY – SCHOOL OF COMPUTING, IT AND ENGINEERING See www.uel.ac.uk/graduation for more information
Thursday 18 November 6pm	Stratford Campus	EVENT FOR LAW ALUMNI AND LEGAL PRACTITIONERS Details will be published nearer to the time.
Tuesday 23 November 11am	Barbican Centre, London	GRADUATION CEREMONY– SCHOOL OF ARCHITECTURE AND VISUAL ARTS; SCHOOL OF HEALTH AND BIOSCIENCE See www.uel.ac.uk/graduation for more information
Thursday 2 December 11am	Barbican Centre, London	GRADUATION CEREMONY – SCHOOLS OF LAW AND PSYCHOLOGY See www.uel.ac.uk/graduation for more information
Thursday 9 December 2pm	Barbican Centre, London	GRADUATION CEREMONY – SCHOOL OF HUMANITIES AND SOCIAL SCIENCES AND GRADUATE SCHOOL See www.uel.ac.uk/graduation for more information
Thursday 16 December 7pm	London	ALUMNI CHRISTMAS PARTY Details will be published nearer to the time.

DO YOU HAVE AN IDEA FOR AN EVENT?

If you have an idea for a possible Alumni Network event, or would like to help organise one, then the Development and Alumni Office wants to hear from you. To get in touch you can either call us on **+44 (0)20 8223 2222** or send an email to alumni@uel.ac.uk

An always up to date calendar of events may be found on our website - www.uel.ac.uk/alumni/events.

RECENT ALUMNI EVENTS

Building Your Business and Your Personal Brand

Docklands Campus, Wednesday 28 April 2010

The aim of this workshop, attended by over 100 students and graduates, was to provide advice to entrepreneurs and those wishing to market themselves more successfully to employers and customers. This was also the first Alumni Network event broadcasted live online for those unable to participate in person. Professor Sonny Nwankwo, who is Director of UEL's Petchey Centre for Entrepreneurship, addressed the importance of an appropriate strategic mindset when embarking upon an entrepreneurial endeavour, while Royal Docks Business School graduate and marketing entrepreneur Wendy Jackson drew on her own experience to provide the audience with practical advice on why research and a strong client focus are necessary for success. Thorsten Klein and Neeta Barot gave advice on the range of entrepreneurial support



▲ From left: Dr. Fariba Salehi, David Royston-Lee, Neeta Barot, Wendy Jackson, Professor Sonny Nwankwo and Thorsten Kline

and student/graduate work placement schemes available from UEL's Knowledge Dock Business Centre, and business psychologist David Royston-Lee then delivered an engaging and inspiring

interactive workshop on how to go about developing your 'personal brand'.

The presentations used by each of the speakers are available to view online at www.uel.ac.uk/alumni/events.htm ■

Transforming the Health and Wellbeing of East Londoners: Concepts and Practices

Stratford Campus, Wednesday 24 March 2010

On the evening of Wednesday 24 March more than 60 alumni, students, staff and health professionals gathered at our Stratford Campus in order to take part in a discussion of public health promotion in East London. The main focus of the debate was on the many different ways in which public health is being, and should be, promoted throughout East London in line with the health and wellbeing objectives set out in the Strategic Regeneration Framework, which has been developed by the five host boroughs of the 2012 Olympic and Paralympic Games.

The event, which was chaired by the Dean of our School of Health and Bioscience, Professor Neville Punchard, featured a panel of high-profile speakers: Professor Angela Harden, Professor of Community and Family Health at UEL's Institute of Health and Human Development; Tim Baker and Jane Connor from NHS Newham; Jo Aitken, Partnership Director at Pro-Active East London, which is based at UEL's Stratford Campus; and Dan Hooper,

Physical Activity Team Leader at London Borough of Newham council.

The audience were able to share their views and put questions to the panel during an extensive and lively discussion session which followed the keynote presentations. Guests were then able to continue their discussions and make new contacts over a networking buffet. The Development and

Alumni Office is grateful to all of those who attended the event and made it such a success. Special thanks go to our guest speakers and the alumni volunteers who helped run the event on the night. ■

▼ From left: Prof Neville Punchard, Prof Angela Harden, Jane Connor, Tim Baker, Jo Aitken and Dan Hooper.



Alumni Christmas Party

Canary Wharf, Friday 11 December 2009

The Corney & Barrow bar in Canary Wharf provided the venue for the 2009 Alumni Network

Christmas party, which was attended by approximately 100 members.

Guests began arriving at 6.30pm and the party was soon in full swing. They were able to pit their wits against each other in a special UEL-themed Christmas quiz, and Santa was on hand to distribute presents.

Many guests stayed long into the evening in order to catch up with old friends, meet new ones and generally enjoy the festive spirit.

The Christmas party provides alumni with an opportunity to socialise with fellow graduates and learn about news and developments at UEL – all within an informal and festive party setting. Last year's party was our fourth, and the event is becoming more popular every year. ■



▲ Revellers at the 2009 Alumni Network Christmas party.

Guest Lecture by High Court judge The Honourable Mrs Justice Dobbs, DBE

School of Law, Monday 7 December 2009

On the evening of Monday 7 December UEL welcomed High Court Judge The Honourable Mrs Justice Dobbs, DBE to deliver before an audience of approximately 100 alumni, students

and staff a lecture entitled, 'Do our judges reflect the society of today? Judicial diversity: facts, theories and perceptions'.

During the course of her presentation Dame Linda spoke about her own

professional experiences, as well as the principles behind promoting greater equality in the UK judicial system and the various methods through which this objective may be achieved. Members of the audience were then invited to share with her their own thoughts on equality and the law, as well as the ways in which all forms of equality could be promoted within the UK legal system.

At the reception which followed guests were able to take advantage of an opportunity to make new contacts and discuss their ideas and experiences.

Dame Linda Dobbs is the most senior minority ethnic judge in the UK. Before being appointed to the High Court (Queen's Bench Division) in 2004 she was a leading barrister, specialising in criminal law. She was named Queen's Counsel in 1998 and served as Chair of the Criminal Bar Association between 2003 and 2004. ■



▲ From left: Joe Greenland, Fariba Salehi, Dame Linda Dobbs, Fiona Fairweather and Mark Stephens.

Occupational and Organisational Psychology Reunion

Stratford Campus, Wednesday 25 November 2009

More than 30 students, staff and graduates of the University's occupational and organisational psychology courses gathered at our Stratford Campus on Wednesday 25 November in order to share professional experiences and practices, meet old friends and make new contacts.

Guest speaker Dr Rainer Kurz, who is a psychologist and Director at Saville Consulting (www.savilleconsulting.com), delivered an interesting and insightful presentation on the theory and application of personality psychometrics.

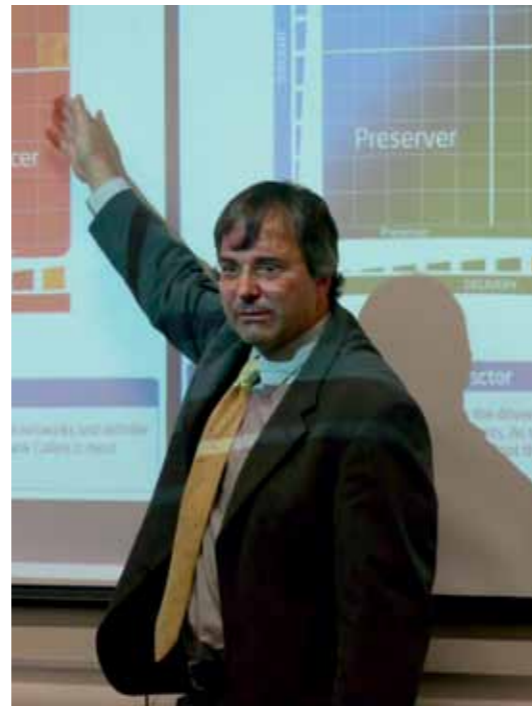
He focused on the development of psychometric questions, the 'Big 5' and 'Great 8' models, before turning to consider modern trends such as the use of internet questionnaires, the role of

preferences and potential aspects, and the development of the 'Wave' model of assessing workers' motives, talents, environmental fit and competency.

"It was a great evening and a chance to meet old students, catch up with their career and life changes, and share what we have been doing at UEL. Many people were amazed by the changes to the Stratford Campus, which is now really taking shape with the new Conference and Computing Centre and Cass School of Education buildings", said Dr Jonathan Passmore, Senior Lecturer at the School of Psychology.

This was the second reunion in as many years, and a third is planned for October of this year. ■

▼ Dr Rainer Kurz speaking to alumni at the reunion



Indian Reunion Events

Hyderabad and Delhi, October 2009

In October of last year a delegation from the University of East London travelled to India to reunite with alumni in Hyderabad and Delhi. Dr Fariba Salehi, Head of Development and Alumni, and Professor DC Chitral Wijeyesekera from the School of Computing, IT and Engineering, represented the University, while Bill Lall – entrepreneur, honorary graduate and founder of the Delhi chapter of the Alumni Network – joined delegates in Delhi.

Dr Salehi and Professor Wijeyesekera first travelled to Hyderabad for a dinner held at the Taj Bhanjara Hotel on Wednesday 28 October, where they were joined by 15 alumni and their guests. Then, on Saturday 31 October, they were joined by 22 alumni at the Taj Mahal Hotel in Delhi. Both meetings were joyful and fulfilling reunions. Those in attendance were able to meet friends old and new, learn about the latest news and developments from the University, and share their views on how to best shape the future of our Indian alumni relations activities. The Development

▼ Alumni and guests gathered at the Taj Mahal Hotel in Delhi.



and Alumni Office wishes to thank all who attended these events, and our sincere gratitude goes to Bill Lall for his continuing generosity and support for UEL and its Alumni Network. We hope to

build on this successful trips and continue the expansion of the Alumni Network's presence in India through further events. ■

ALUMNI NETWORK MEMBERSHIP BENEFITS

The Development and Alumni Office is continuing to expand the number of benefits and discounts available to Alumni Network members.

An exhaustive and up-to-date list may be found on our website – www.uel.ac.uk/alumni/benefits – and we will continue to announce new offers and services in our quarterly e-newsletters and future editions of *Now and Then*.

Services and benefits offered by UEL include:

- a new 10% postgraduate course fee discount – see page 27 for details
- 'Trace a Classmate' – www.uel.ac.uk/alumni/traceaclassmate.htm
- a webpage dedicated to jobs and courses available to alumni – www.uel.ac.uk/alumni/benefits/careersupport.htm
- access to our libraries and Students' Union facilities with the Passport swipe card.

The following companies also offer discounts to Alumni Network members:

- Avis Rent A Car – save money on car rental at AVIS locations worldwide
- The Bank of America affinity credit card – show your affiliation to UEL and contribute to the Annual Fund whenever you use your card
- Big Yellow Self Storage – an additional 10% on top of any other applicable discounts at centres throughout the UK
- gosimply.com – a range of discounted travel services
- The Gourmet Society – save money on their Dining Card, which entitles the holder to discounts at more than 3,000 restaurants throughout the UK
- InterContinental Hotel Group – save on worldwide hotel and resort bookings
- Nelsons Solicitors – save 10% on the firm's online legal services
- The Royal Commonwealth Society

– discounted membership and great benefits

- Sea France – discounts on Dover-Calais ferry services.

£200) and just £230 a year (usually £290).

For a full list of membership benefits visit www.therics.org/membership or go to www.uel.ac.uk/alumni/benefits to download an application form.

NEW BENEFITS

gosimply.com

gosimply.com helps thousands of people find the very best travel deals every week, and is now offering Alumni Network members a range of exclusive discounts on their travel services, including:

- 20% discount on a comprehensive range of travel insurance policies
- 10% discount on airport lounges for a slice of the VIP lifestyle
- 5% discount on car hire prices.

gosimply.com also allows you to search for the best airport parking and airport hotel prices.

For details of how to take advantage of gosimply.com's offer visit www.uel.ac.uk/alumni/benefits

The Royal Commonwealth Society

The Royal Commonwealth Society at the Commonwealth Club is a modern, vibrant and welcoming club situated in the heart of central London. Its members are able to take advantage of an outstanding range of facilities and events.

For example, members are able to meet friends and colleagues at lunch or after work in the Members Lounge, eat at its excellent restaurant and make valuable new personal and professional connections at its regular events.

Members may also benefit from the Club's reciprocal arrangements with 100 clubs worldwide. Alumni Network members receive the following discounted membership rates, and it is possible to pay your fees through smaller regular instalments:

- Under 25s – No joining fee (usually £200) and just £75 a year
- Over 25s – No joining fee (usually

SOCIAL NETWORKING SITES

UEL and the Alumni Network are present on all of the major social networking sites, and you can use them to stay in touch with the University, make new friends and contacts, and keep up to date with the latest Alumni Network activities.

facebook

The University of East London Alumni Network group is for all alumni.

LinkedIn

LinkedIn's general University of East London group allows new contacts to be made from throughout the alumni community, while subject specific groups exist for MBA and Occupational and Organisational Psychology graduates.

XING

XING's University of East London, Graduate Alumni and Alumni of the D A CH (Germany, Austria and Switzerland) groups offer more professional networking opportunities for our graduates.

orkut

The Alumni Network's Delhi chapter has its own group on Orkut.

ALUMNI VOLUNTEERING FORM

Dear Graduate,

Please let us know if you have extensive experience in any of the following fields and wish to offer your voluntary expertise to UEL, by ticking the relevant box.

Please send the completed form to Alumni Development Officer, Docklands Campus Room WB 2.14, University Way, London E16 2RD

ALUMNI VOLUNTEERING OPTIONS (Please tick)

EMPLOYMENT

- Becoming an assessor at Employment Assessment Centres
- Offering paid job placements to our students
- Offering unpaid work experience to our students
- Becoming a Mentor
- Giving a talk on employment-related issues to students
- Giving careers advice to students either in person or online
- Placement schemes for our students from Primary PGCE alumni.

COMMUNITY INVOLVEMENT

- Leadership Summer School – for leaders and successful alumni to make

presentations and interviews on leadership skills

- Curriculum Achievement Days – for those who are linked to a particular curriculum area
- Family Awareness – for alumni parents to share their experience and give a 'real world view' of the progression pathway to other parents

ALUMNI AND STUDENT EVENTS

- Helping in Open Days for Student Recruitment, Recruitment Fairs (UK and International), Alumni events, Graduation Ceremonies or other events
- Giving a speech at alumni events
- Setting up alumni associations in your locality or country

- Offering venue for alumni or corporate events

- Participating in a focus group

ADMINISTRATION

- Helping out with admin tasks in the office
- Data entry

FUNDRAISING

- Supporting us in our campaigns
- Donating
- Fundraising for us

OTHER

- Is there another way you would like to offer your help not listed above?

Please give details below of any other activity you would like to get involved in.

Yes! I am interested to help and have ticked the relevant boxes.

YOUR DETAILS

Title: First Name:

Surname:

Address:

Email: Telephone:

Degree title and year of graduation:

Which UEL School:

Current job title:

Company name and website address:

Area of expertise (please explain):

Other comments:

SAVE MONEY ON POSTGRADUATE STUDY AT UEL

There has never been a more important time to consider enhancing your career prospects with the help of a postgraduate qualification. We have more than 130 postgraduate programmes available and, as a UEL graduate, you could receive big savings on your postgraduate degree.



POSTGRADUATE RESEARCH PROGRAMMES

UEL is offering a 5% reduction in tuition fees if you study a research degree (MPhil or PhD). Alumni must enrol on their course within three years of graduating from any UEL undergraduate degree, or within two years of any UEL taught postgraduate degree.

POSTGRADUATE TAUGHT PROGRAMMES

From September 2010 UEL will be introducing a 10% discount to all students who enrol on a full-time postgraduate programme (Master's, research or professional doctorate) within three years of successful completion of their undergraduate degree or PGCE at UEL. The 10% discount will be deducted from your tuition fees after any Merit scholarships and before any early

payment discount is applied. It can also be used in conjunction with other scholarships and funding. You could make huge savings on your study!

To take advantage of the new 10% discount just make it clear on your application form that you have previously studied at UEL, and include your student ID number. We'll do the rest! ■

For more information about the discount email smart@uel.ac.uk or call **+44 (0)20 8223 6200**

For more information about our wide range of postgraduate programmes contact our Applicant Enquiries team on **+44 (0)20 8223 3333**, or log on to www.uel.ac.uk/pg to find the course that suits you.

SAVE ON POSTGRADUATE STUDY!

Example 1

An international student studying for a MSc in Project Management

Course fee (2009–10): £11,700
 Less the 10% alumni discount (£1,170): £10,530
 Less the 5% early payment discount (£526.50): £10,003.50

That's a potential saving of £1,696.50!

Example 2

A full-time UK/EU student studying for a MSc in Civil Engineering

Course fee (2009–10): £4,800
 Less the 10% alumni discount (£480): £4,320
 Less the 5% early payment discount (£216): £4,104

That's a potential saving of £696!



ALUMNI INTERVIEW



Superintendent Leroy Logan MBE

1980, BSc Applied Biology

Leroy Logan grew up in Islington, London, and graduated from North East London Polytechnic (now UEL) in 1980 with a BSc in Applied Biology. He spent three years working as a postgraduate medical researcher before joining the Metropolitan Police Service in 1983.

With a strong operational background, which has included undercover work with CID, Leroy has spent the majority of his career working in inner-city stations.

He has been involved with many high-profile cases and inquiries, including those into the murders of Stephen Lawrence, Victoria Climbié and Damilola Taylor. In the 1990s he helped found the Black Police Association and served as its first national chairman.

In 2001 Leroy was awarded an MBE for services to the Police Service and to community relations. His last borough posting was in Hackney, where he served as Deputy Borough Commander until November 2007, when he moved to his current role at the Olympic Policing Co-ordination team (OPC). Away from work he is involved with many charities, including the government's REACH National Role Model programme, Hard Knock Productions, Bigga Fish Productions and his own organisation, REALITY (Raising Everyone's Awareness of Lives Lost in The Youth).

Q Why did you choose to study applied biology at NELP?

A I did my A-levels in Hackney and towards the end of my studies I visited a friend at NELP. He showed me around and left me convinced that I wanted to go there, too. I liked the campus and it had good transport links. Unlike many other school leavers I was very happy to stay close to home, and the structure of the course suited me. I was already thinking about my future, and chose to focus on pharmacology and toxicology. This decision worked out well, as I was able to go straight from NELP into a research job at the Royal Free Hospital in Hampstead.

Q What then attracted you to a career in the police?

A I suppose it was a calling. I had always identified with the principles of policing – the protection of people, property and the peace.

I was a regular user of the Royal Free Hospital's sports facilities, as were policemen from nearby Hampstead station. We would often go to the bar

together after workouts, and in getting to know them I was able to discover the human side of policing. Then one day my boss, Professor Roy Pounder, approached me. He thought that I was doing excellent work, but felt that my personality wasn't really suited to the job. I asked him what he thought I should do, and his response was that I should be a police officer! This convinced me and I submitted an application. Events in my family life then caused me to have serious doubts about this decision, but my wife persuaded me not to withdraw my application by pointing out that as a police officer I would be able to stand up for equality and justice. This argument provided the clearest reason of all for joining. My application was successful and I joined in June 1983.

Q What have been the highlights of your career?

A I am pleased to have been able to take promotion and work in interesting areas. However, my most significant achievements have come away from my direct line of work with young people.

Early in my career in the 1980s, I

was able to establish only the second Volunteer Cadet Corps, and it was very rewarding to work with these young people. I am still in touch with many of them today. Likewise, my development of the Cultural & Communities Resource Unit has been of enormous benefit. An organisation which reflects its community is best able to serve its community, and this unit brought together for the first time a properly organised system of delivering affinity based policing.

It is now 17 years since the first meeting of the Black Police Association took place, and I believe that the organisation is still a force for good. In 2001 I helped it establish Young Leaders for a Safer City, which is a course run for year nine children with the aim giving them the leadership skills to believe that they can change their surrounding environment for the better.

One-third of my career has been spent serving in Hackney. I really enjoyed working there and believe that it is today a much safer place than it was when I first became a police officer.

The closure of the Palace Pavilion on Lower Clapton Road was one highlight of my time working in the borough, as

the club accounted for 60% of gun crime and 80% of murders committed with firearms – a situation which changed little even after we worked with its manager to improve security. The Licensing Act 2006 was used to close the club and as a result gun crime in the Lower Clapton Road area halved, and the nickname 'Murder Mile' disappeared – community reclaimed it as 'Peace Mile'.

Q What can you tell us about the work of the Olympic Policing Co-ordination Team and your role within it?

A The OPC is a multi-agency team which is working with the Olympic Delivery Authority and the London Organising Committee of the Olympic Games to ensure a safe, secure and enjoyable sporting event, and to make sure that security arrangements fit clearly and concisely within their plans and budget. Within the OPC there are five programmes.

My own role is that of Portfolio Co-ordinator within the Identify & Disrupt programme. We are charged with the detection, prevention and disruption of threats through the use of people and technology – without the disruption of business as usual for residents. I work with many individuals and organisations. For example, I am working with local colleges to develop a training course, called 'Bridging the Gap', for Games security personnel.

Q What are the challenges of policing the Games, and how do you go about planning for them?

A Given the scale of the project it is important that every police force from throughout the country is involved, and there has never before been a cause to which all 43 forces have been signed up. We are working harder and smarter, and in a more joined up way, and we have been working closely with officials from other host cities. A clear financial strategy is also very important, as are transparency, accountability and collaborative working at the highest levels of government. The public must have an input - hence the organisation of road show and town hall meeting events. The governance and internal audit procedures



in place are doing an excellent job, and the IOC has praised how we are approaching the task – but all of this will be in vain if it is not an enjoyable event with significant legacy benefits.

Q How will security and policing affect the daily lives of East Londoners during the Games?

A It will be business as usual. Our aim is to ensure that there is no impact on the community's core functions, and we are working hard to ensure that each borough operates normally. To achieve this we are working closely with many organisations, such as Transport for London. We are working to keep roads clear by encouraging the Olympic family – athletes and officials – to use prescribed transport arrangements, and a lot of effort is going into making the rail and tube systems work as well as possible. I hope that residents will use the Games as an opportunity to show off East London.

Q You devote a significant amount of time to charitable work. What do you get out of this?

A I believe that when you are successful you should give back, and I see myself as an enabler. People have come to my assistance over the years, and if I can give my time and use my expertise and contacts in order to help people to develop then I will do so with a happy heart. It's not as challenging as it may seem. People aren't asking for much – they just need your time. It gives me a real buzz.

Q Finally, what advice are you able to provide for anyone considering a career in the Police Service?

A Policing is a demanding, but rewarding, job. You have to be a people person in order to deal with both the public and your colleagues. You must have an ability to engage with your community, as well as a passion for helping people. Our role is to create safer, stronger communities. The police are not always seen by the public in the right light, and you will experience challenges. However, the principles of what we do are laudable, so it is ultimately rewarding. ■



Declan Henry
1999, BA (Hons) Education and Community Studies

"I can't believe that it is eleven years since I graduated from UEL. I spent one year there to complete level-three studies, having already attained a diploma from Goldsmiths College in community and youth work.

Goldsmiths was interesting but I found UEL far more motivating. In the former I felt part of a pre-Big Brother experiment in which contentious topics designed to test our prejudices mainly resulted in conflict and distrust. UEL provided a warm welcome into a cordial environment where I made friends easily from its diverse ethnic mix. This made me realise what university should be like, and I regretted not joining sooner. I did my thesis on education and youth homelessness, but it was whilst studying social policy that I decided to pursue social work after graduation. The following year I completed my social work training by Accreditation of Prior and Experiential Learning, combining modules I had completed at UEL and Goldsmiths with further part-time studies at Havering College. I later completed an

MSc in Mental Health Social Work at King's College, London. I have been in continuous full-time employment since graduating from UEL. My first job was in forensic mental health. I later switched to working with young offenders, and have worked in both a custodial setting and more recently in a Youth Offending team. A social worker needs fire in their stomach and strong willpower to affect change in people's lives. Every day is typical in the sense that you encounter a constant stream of emotional wreckage – young people whose lives have been blighted by abuse, neglect, brutality and poor parenting.

My first book, *Glimpses*, was published in 2007 and is a collection of 26 short stories about disaffected youth. Set in Ireland and England, it deals with the full spectrum of problems affecting young people today. I have also written several social work articles that have appeared in magazines and academic publications, some of which are on my website – www.declanhenry.co.uk

Felicity Gower
2007, BA (Hons) Fashion Design with Marketing

Felicity studied Fashion Design with Marketing at UEL and graduated in 2007 with a first-class degree. She went straight into her first job at fashion retailer Tammy, starting off as a Buying Associate and working up to Assistant Buyer. This experience, combined with an excellent commercial background provided by her degree, inspired Felicity to take the leap into self-employment. "I could not have achieved this without the excellent marketing aspect of my course, and in particular the encouragement of my tutor Julie O'Sullivan, who I was most excited to tell about Now, Voyager", she says. Felicity opened Now, Voyager in October 2009 with best friend and business partner Lauren Mittel. Now, Voyager is both a boutique and an online shop selling 1940s/1950s inspired clothing, jewellery and own-label quirky hair accessories. The company's range include: flowers of all types, from roses to lilies and Hawaiian; floral corsages, knitted cakes and cookies; brightly coloured birds; a 'party bag' range including seaside windmills and plastic gun hair clip sets; and exclusive seasonal

ranges for all occasions. Felicity and Lauren "believe every single lady has the right to look pin-up gorgeous every day of the week, and that right should be fun and affordable". Felicity hand makes all of the company's hair accessories, with her inspiration coming from

the dedication to image shown by those such as the teens of Harajuku to the pin-ups of today's 1940s/1950s revival scene.

Find out more at www.now-voyager.co.uk



KNOWLEDGE DOCK MAKES IT HAPPEN FOR GRADUATE ENTREPRENEURS

Knowledge Dock recently joined forces with the National Council for Graduate Entrepreneurship (NCGE) to promote Flying Start Make it Happen, which is the NCGE's flagship programme aimed at graduates and final-year students who are interested in setting up their own business. The event, which was attended by 100 budding entrepreneurs, was designed to raise their interest levels in starting up their own business and help them overcome obstacles stopping them from doing so.

Attendees were treated to a number of workshops delivered by serial entrepreneurs Owain Wyn-Jones and Andrew Davies, who drew upon their vast experience to deliver informative sessions in topics such as market research, finance, marketing and customer service. Owain has spent 12 years running his own successful IT, marketing and advertising businesses, while Andrew has worked for BBC Radio and was headhunted to become part of the team which set up MySpace in the UK. Individuals also had the chance to network with past beneficiaries of entrepreneurship programmes, such as Be Your Own Boss, who have already taken their first steps in their entrepreneurial careers. Approximately 80% of attendees have now signed up to the 12 month programme and will benefit from online resources, seminars and mentoring at zero cost throughout the course of the programme.

"UEL provides an exciting and supportive environment for individuals who want to explore entrepreneurship as an alternative career path. We run a series of parallel programmes such as the Be Your Own Boss programme and the annual E-Factor competition, and we also have the Petchey Centre for Entrepreneurship, where students can access a wide range of business information and support as well as access hot-desking space", said Thorsten Klein, Business Incubation Manager at Knowledge Dock. ■

E-FACTOR COMPETITION

UEL's flagship enterprise competition has this year been won by postgraduate architecture student Owen Morgan, for his winning idea, Cambridge Solar. Owen,



whose idea focuses on creating solutions to energy problems through the use of solar power, was delighted with the result and his first prize of £10,000.

"It was quite nerve-racking really, the anticipation of waiting to find out who had won. On finding out it was fantastic – I wasn't expecting to win with the quality of the other competitors. I'm delighted to have won and equally excited about starting up the company", he said. The Grand Final saw ten finalists present their business plans to a panel of judges, with five selected to present their ideas to invited guests, who were able to pose questions and then vote for the winner.

"[Owen is] a very worthy winner. He had done a lot of research that showed through when he presented to the audience. The other contestants shouldn't get despondent. I hope they carry on working with their mentors and business advisors. What we have given them today is the chance to present in a stressful environment, where the adrenaline is running and they have to sell the key points of their company", said Rob Moss, Director of UEL's Knowledge Dock Business Centre. I was struck by the

passion and enthusiasm of all the finalists. I think this year's event was fantastically successful. "I got the impression all the contestants learnt a great deal from the competition", added the Vice-Chancellor, Professor Patrick McGhee. ■

KNOWLEDGE DOCK is UEL's enterprise development service and London's only European Union accredited Business Innovation Centre. It works to connect students to business opportunities, enables entrepreneurs to make the right connections to start their business, SMEs to the specific expertise to grow their business, and industry to the academic knowledge of the University. Knowledge Dock is located at UEL's Docklands Campus and houses a range of business support, enterprise development and conferencing facilities.

Visit www.knowledgedock.com to find out more about Knowledge Dock's services and how they may be able to help you and your business.

GRADUATE ENTREPRENEUR PROFILE



Dr Tim Hunter 2009, PhD Health and Biosciences

One year after winning Knowledge Dock's E-Factor business plan competition with his idea for 'Rehab Tracker', an online web application that supports patients in their home recovery programme, we catch up with UEL graduate Dr Tim Hunter to discuss the progress he has made since winning the competition.

Q How has your business idea progressed since winning the competition?

A Since winning the competition the web application has undergone a period of rapid technological development and testing. As a result of this we have added several modules to the system which will help patients before, during and after their rehabilitation program. In addition to this I have also spent a lot of time developing the front end of the system and developed a new flash-animated demonstration which helps to illustrate our service offering more effectively. Interestingly, a consequence of all this development was that I thought the service now offered a more holistic level of rehabilitation support and to reflect this I decided to change the name to Rehab360°.

Q What major challenges have you encountered while turning your idea into reality?

A The biggest challenge I have faced since winning the competition has been developing my skills and knowledge to allow me to continually develop the business. Having said that I am really enjoying the experience and my days are always eventful. One day I might be dealing with a sales and marketing issue, the next a financial or HR-related issue

and more recently trying to transfer the application to a mobile phone platform. It is a lot of hard work, but at the same time it is very rewarding, especially when you see the business growing and when you sign up a new client.

Q What support have you received from Knowledge Dock since winning the competition?

A The support I have received from Knowledge Dock has been vital to Rehab360°'s development. Throughout all the challenges, the Knowledge Dock team have been behind me 100% of the time, pushing me up to the summit. From the free marketing and legal workshops I have attended to the personal business advice that I still receive today, all the support provided by Knowledge Dock has been a great help in moving my business and my own personal development forward. What's more, the team have also helped to introduce me to a number of key organisations in the local area so I could pitch them my service offering.

Q How has winning the E-Factor changed your life?

A The competition has changed my life in the sense that it has provided me with the opportunity to develop what was an ambitious idea into a fully

working and fully tested service. I had the idea for Rehab Tracker for a few years and when I saw the E-Factor competition being promoted I thought that this would be a great platform for me to test if the people external to the idea thought it had potential. Thankfully I won the competition and in essence the competition has helped instil a sense of confidence in my idea and this is constantly being reinforced as my business develops. More importantly, from a personal point of view the competition has helped to develop a range of business skills that I wouldn't have developed during my normal course of work. I feel I am a much more rounded professional compared to a year ago.

Q What are your hopes for your company over the next five years?

A I hope in five years time that Rehab360° will establish itself as a market leader in rehabilitation support for physiotherapists. It is an ambitious target but one that I think Rehab360° will achieve. As the old saying goes, you must shoot for the stars!

For more information on Rehab360° visit www.rehab360.co.uk.

NEWS FROM UELconnect

Are you thinking about advancing your career, but can't attend a full-time course on campus? Are you disabled, a carer, in full-time employment, or far away but would like to do some flexible studies from your own base and in your own time? If so, UELconnect is for you.

UELconnect delivers flexible learning opportunities and offers a wide variety of distance learning, work-based programmes and short courses. Its range of undergraduate and postgraduate degree programmes can be studied by distance and e-learning. Many short courses run in the evenings or at weekends and can be completed around other commitments. The Foundation Degree in Professional Development offers people who are working the opportunity to gain a recognised university qualification directly related to the activities of their job while fitting study around work.

UELconnect SHORT COURSES

UELconnect's short courses can help you to develop your career, boost your qualifications or simply learn something new. Run during the evenings and at weekends, course are competitively priced, and many are discounted for alumni. You will be tutored by expert lecturers in partnership with specialists from industry. Current short courses include:

- Certificate in Linux Administration (leading to CompTIA Linux+ certification)*
- Certificate in IT Support (leading to CompTIA A+ certification)*
- Certificate in Developing Websites using HTML, Dreamweaver and Flash*

- Sports Massage Techniques
- CCNA * Certificate in Network Security (leading to CompTIA Security + certification)*
- Certificate in Java Programming (leading to Sun Java certification)*
- Human Resource Management for Small to Medium-sized Enterprises (SMEs)
- Crash Course in New Technologies
- Women and Leadership (in public and third-sector organisations).

*£50 discount available

To find out more visit www.uel.ac.uk/uelconnect/

“ It is a unique way of studying as you get to base the assignments on projects at work, and it has really helped in my work as I now have a much better academic understanding of business. I'm hoping that this degree will now open up new opportunities for me at work.

For people considering distance learning I would say that you need to be self motivated and committed but it is worth the hard work in the end.” **Tom Lowe** completed a BA in Business Management (Human Resources) by distance learning.

“ The best thing about studying this way is that I've been able to pay for my degree as I went along. Unlike other students I have not taken out any student loans and have come to the end with no debts. It's taken a lot of hard work and self motivation but it's been really helpful being able to communicate with the other students and mentors by email for a bit of extra support. It's been a challenge but with a real sense of achievement at the end.” **Jessica Thompson** completed the BA (Hons) Psychology Studies course in three and a half years whilst working three days a week as a care support worker.

FREE UELconnect SHORT COURSE: SOCIAL MEDIA MARKETING FOR SMALL BUSINESSES

This course provides an introduction to social media marketing and focuses on the use of three technologies: blogging (Google Reader and Wordpress); social networking (Facebook); and micro-updating (Twitter). The course is delivered online and support is provided through group discussions and scheduled chat sessions. Topics covered include:

- The importance of social media
- Social media marketing – building

a community with your customers, promoting your business and encouraging conversations

- What social media tools are your competitors using and how
- The importance of blogging – posting, commenting, participation and engagement
- Using Facebook business applications
- Establishing a social media strategy

These courses run in July and September.

To find out more about UELconnect courses, or to book a place, call **+44 (0)20 8223 4368**, email short.course@uel.ac.uk or visit www.uel.ac.uk/uelconnect/short_courses. Tel **+44(0)20 8223 2161**

BOOST YOUR BUSINESS WITH A GRADUATE INTERN

Are you looking for help with your business but don't have the resources to hire a full-time member of staff? KnowledgeEast, a group of seven London universities, can provide you with a skilled, enthusiastic graduate intern and a contribution of £1,000 towards their salary costs. We take the stress out of recruitment and selection to provide you with the right graduate to fit your needs.

WHAT'S IN IT FOR YOUR BUSINESS?

This is an opportunity for you to take on a bright graduate who can add value to your business. The Government is aiming to stimulate growth in key sectors, particularly with small and medium enterprises, and is funding this initiative. A graduate intern can help you to:

- develop a new database or build a new website
- work on a marketing project to identify new business opportunities
- carry out a research and development task to scope new work
- support a team or individual during a time of increased workload
- provide administrative assistance.

HOW DOES IT WORK?

You will be given £1,000 per intern as a contribution to their salary. You are also encouraged to make contributions for

travel or lunch costs. Interns must be paid at the minimum wage and the internship must last for at least four weeks. Should you decide to retain your intern for a longer period then you would then need to cover their costs.

Visit www.uel.ac.uk/keinterns to complete the application form, or contact Laura Barkaway on +44 (0) 20 8223 7265/2424 or KnowledgeEastInterns@uel.ac.uk for more information.



BELLAGLADE LIMITED

PERSONAL AND CONTINUING PROFESSIONAL DEVELOPMENT

Calling all budding and professional psychologists...

CVs, lists of agencies, payment rates, employment advice, job searches, book lists, etc. We operate a sliding scale with a minimum consultation fee of £10. Students and individuals receiving state benefits welcome!

For further information, please contact Ms Samantha Burney-Nicol, Managing Director on +44 (0)20 8586 7980, +44 (0)7961 615584 or samantha.burneynicol@btinternet.com

www.bellaglade.co.uk

IMMIGRATION ON YOUR MIND?

AS A UEL GRADUATE, YOU'RE LOOKING FORWARD TO STARTING YOUR CAREER. THE FIRST STEP TO TAKE IS TO CHANGE YOUR STUDENT VISA TO ONE THAT LETS YOU WORK FULL TIME.

DON'T WORRY – HELP IS AT HAND.

UKmigrate.com is a local firm of specialist immigration consultants. From Tier 1 Post Study Work to Tier 1 General, we've got it covered!

We have the knowledge and experience to advise you on all your immigration options. We work on a no visa no fee basis so call us today for competent advice.



Freephone: **08000 786 786**

Telephone: **+44 (0)20 8911 8886**

Text 'visa' to **60777** for a call back

UKmigrate.com

08000 786 786

UKmigrate.com / 58b Ilford Lane / Ilford Essex IG1 2JZ

UKMigrate.com is registered with the Office of the Immigration Services Commissioner. For further information please visit: www.oisc.gov.uk/people_seeking_immigration_advice/register_of_immigration_advisers/

THE MAGAZINE OF THE UNIVERSITY OF EAST LONDON'S ALUMNI NETWORK

For further information about all alumni matters and enquiries, please contact:

Development and Alumni Office
University of East London
Docklands Campus
Rom WB 2.14
University Way
London E16 2RD

+44 (0) 20 8223 2222
alumni@uel.ac.uk

THE ALUMNI NETWORK provides a global platform, and a calendar of annual events in the UK and overseas for you to remain in touch with your university, maintain your relationships with former classmates and stay connected to our UEL family for years to come.

The mission of the UEL Alumni Network is to create and sustain lifelong and mutually beneficial relationships between UEL and its alumni.

The aim of the UEL Alumni Network is to provide our alumni with a range of discounts, services, and an interesting programme of events and communication that encourage our alumni to be closely involved with the UEL community and its aspirations for the advancement of higher education in our communities.



www.uel.ac.uk/alumni